



USB Troubleshooting for Race Studio 2, Drag Analyzer and Light Analyzer

Written by Scott Jessup, AiM Sports Support Technician
www.aimsports.com * 800-718-9090

This document explains Race Studio 2 and USB Driver installation, but also applies to all other AiM software including DragAnalyzer and Light Analyzer.

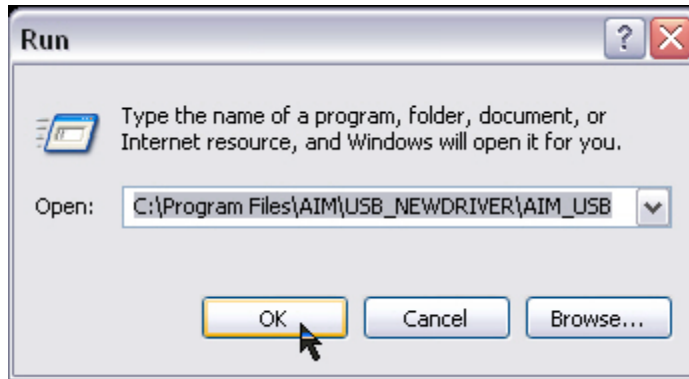
Note: this installation procedure is only valid for:

- Race Studio 2 - 2.20.00 version or later.
- Drag Analyzer - 1.05.00 version or later
- Light Analyzer - 1.01.00 version or later

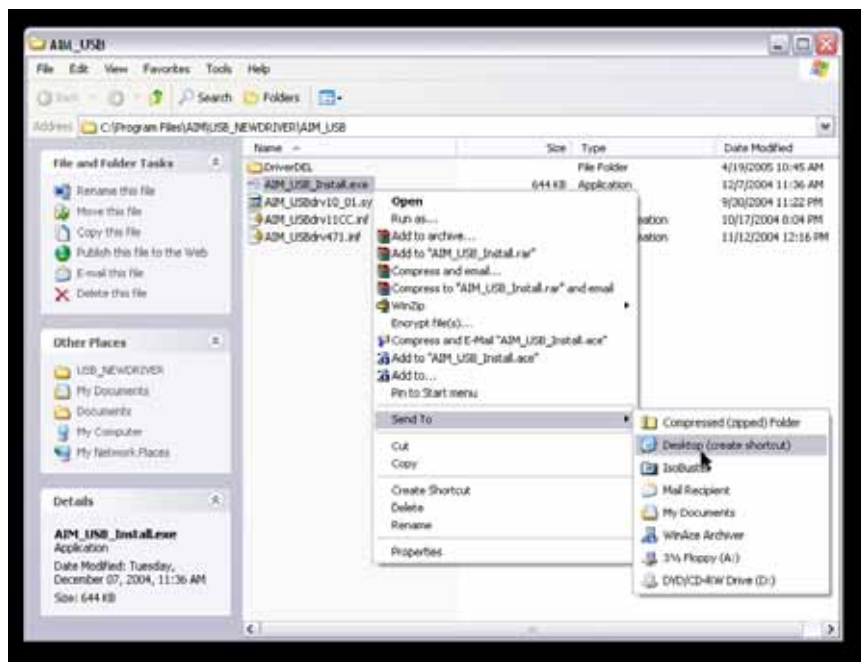
If you have installed Race Studio 2 and you are still experiencing communication issues with your data logger, then try the following suggestions:

- I. Update Race Studio 2 to the latest version available on the website.**
- II. Confirm that you have updated your logger with the latest firmware version.**
Race Studio 2.20 includes a new set of USB drivers that are installed after the software. Therefore, there are a new set of firmware updates for all of our loggers with USB. Check our website for the firmware update that applies to your hardware. <http://www.aimsports.com/software/index.html>
- III. Reinstall the USB Drivers.** Sometimes it is necessary to completely remove all of the USB drivers and then reinstall them again from scratch.
 1. UNPLUG YOUR USB CABLE FROM THE PC AND THE MYCHRON, MXL, MCL TG, EVO, OR 660 BEFORE BEGINNING
 2. Shut down all other applications that are running (including Race Studio2 or RS2 Analysis).
 3. Click on the *Start* button, then select *Run...*

4. Type **C:\Program Files\AIM\USB_NEWDRIVER\AIM_USB**. Select *Ok*.



5. Inside this folder, you will find a file named **AIM_USB_Install.exe**. Right click on this file, then select *Send To*, then select *Desktop (create shortcut)*.



6. Close this window so you are back to your Desktop. You should now see a new icon and shortcut:

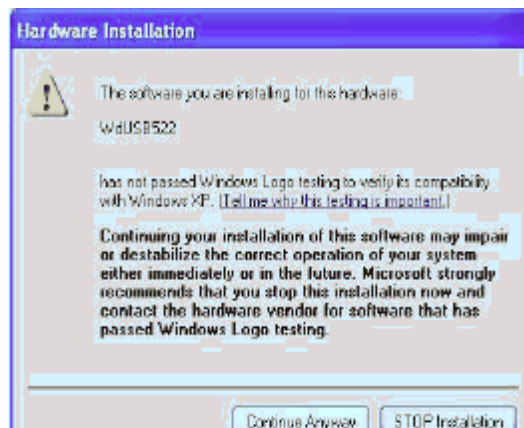


7. Double click on this shortcut and begin the program.

8. Select *Erase Aim Driver*.

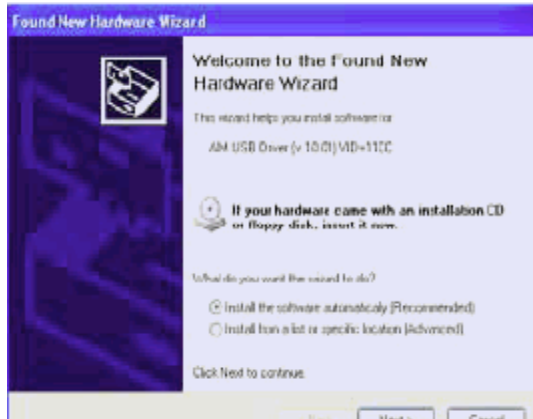


9. Allow the program to run its course. Select *Continue Anyway* if any **Windows Logo Testing** warnings appear.



10. Once the program has completed, reopen the program by repeating Step #7. **DO NOT RESTART YOUR COMPUTER YET.**
11. When the program opens, the selections will be different than the first time. Select *Start* in the bottom left hand corner. Select *Continue Anyway* through all Windows Logo Testing warnings.
12. Once the program is finished, restart your computer. Wait for the PC to fully complete the Start Up procedure
13. Plug in both ends of the USB cable and turn on your logger.

14. Within a few seconds, the **New Hardware Wizard** should appear. (Note: If Win XP SP2 has been installed, then the first screen of the Wizard attempts to access the Internet to help look for appropriate drivers. Select *No, not at this time* and then *Next*).
15. Select the *Install the software automatically (Recommended)* option and then hit *Next*. (You will not need to have an Installation CD or floppy disk to complete the Wizard). Just as before, *Continue Anyway* is the correct answer when appropriate.



16. Once the Wizard has completed, repeat the process with each additional USB port found on your PC. (These should be much quicker than the initial installation).