



The Race Studio



Software manual
Configuration for MyChron2

AIM s.r.l. reserves the right to make changes in the content of this manual without obligation to notify any person of such changes.

AIM s.r.l. shall not be liable for any errors contained herein or for incidental or consequential damages in connection with the furnishing, performance or use of all the parts (hardware, software and manuals).

Revision code: 1649-10001-0100.

Microsoft®, Windows® 95, Windows® 98 and Windows® 2000 are registered trademarks of Microsoft Corporation.

Table of Contents

TABLE OF CONTENTS.....	3
INTRODUCTION.....	5
WHAT IS THE RACE STUDIO?.....	5
WHAT YOU CAN FIND IN THIS MANUAL.....	5
CHAPTER 1 - DATA ACQUISITION CONCEPTS.....	6
1.1 – ANALOGUE AND DIGITAL SIGNALS.....	6
1.2 – SAMPLING RATE.....	6
1.3 – DATA DOWNLOAD.....	6
CHAPTER 2 – SOFTWARE: GENERAL DESCRIPTION.....	7
2.1 – INTRODUCTION.....	7
2.1.1 - Notational Conventions	7
2.2 – GETTING STARTED.....	8
2.2.1 – Before using the MyChron2 system	8
2.2.2 – Race Studio concepts	8
Tests.....	8
Track.....	8
Configuration.....	8
Channels.....	8
2.2.3 - The Race Studio folders organisation and files	8
2.2.4 – Run the program	9
2.2.5 – MyChron2 device selection	9
2.2.6 – Language selection	10
2.3 FUNCTIONALITY.....	11
2.3.1 – Main window	11
2.3.2 – Math channels	12
2.3.2.1 – Standard version	12
2.3.2.2 – Advanced version	13
Using math formula interpreter.....	15
CHAPTER 3 – SOFTWARE: MAIN COMMANDS.....	17
3.1 – INTRODUCTION.....	17
3.2 – FILE COMMANDS.....	17
Backup test.....	17
Restore test.....	17
Delete test.....	17
Exit.....	17
3.3 – TRACK COMMANDS.....	18
New.....	18
Selection.....	18
Modify.....	19
Delete.....	19
3.4 – CONFIGURATION COMMANDS.....	20
General.....	20
Input channels.....	20
Math channels.....	21
Standard version.....	21
Advanced version.....	22
3.5 – DOWNLOAD COMMAND.....	23
3.6 – ANALYSIS COMMAND.....	24
3.7 – HELP COMMANDS.....	25
Manual.....	25
About Race Studio.....	25
CHAPTER 4 – TROUBLESHOOTING.....	26
4.1 - Data logger does not reply during serial communication	26

On line operations.....	26
Download operation.....	26
4.2 - The data logger did not record data	26

Introduction

What is the Race Studio?

The Race Studio software is able to communicate with all the **Aim** data loggers and to analyse the data recorded by them.

This manual gives you all the information necessary to use the Race Studio with the MyChron2 data logger.

The Race Studio exists in two different versions: **Standard** and **Advanced** (for more information about the differences between the versions see the “Installation manual”); this manual is designed for both the **Standard** and the **Advanced** versions of the software.

The MyChron2 system has two main functions:

- it records data collected by the data logger mounted on your vehicle,
- it provides the means to display and analyse the recorded data. A PC program (Race Studio) allows the user to see and print the data in a lot of different ways and to configure the data logger.

These figures are performed joining the hardware performances and the software functions.

What you can find in this manual

Here in the manual you can find a full description of the functions necessary to configure the software and to communicate with the MyChron2 data logger.

More in details:

Chapter 1 gives some general data acquisition concepts for an easier understanding of the MyChron2 system.

Chapter 2 gives a general description of the main functionality of the Race Studio software.

Chapter 3 describes all the general functions for the hardware management provided by the Race Studio software.

Chapter 4 explains how to solve the most common troubles concerning the utilisation of the MyChron2 system.

Chapter 1 - Data acquisition concepts

1.1 – Analogue and digital signals

The measurement of a physical quantity, such as the speed of a car or the temperature of the exhaust gas is at the same time a very simple and a very complex operation.

The first element necessary to the measurement is the sensor; it is a device that transforms a physical quantity in an electrical signal.

An electrical signal may change between two fixed values or it may assume any value in a fixed range, moreover it can be defined in a continuous time interval or in discrete time.

When a signal is defined in discrete time interval and can assume any value in a fixed range it is named **analogue**.

When a signal is defined for finite time intervals and can assume only fixed values it is named **digital**.

A data logger records and a Personal Computer elaborates only signals in a numerical (or digital) form, for this reason it is necessary to convert all the signals in a digital form.

The data logger makes the conversion.

The sensors used for the measure of the number of engine revolutions and wheel speed provide an output signal assuming only fixed values and it is defined for a continuous time interval. The data logger converts these signals in a digital form counting the impulses generated by the sensors.

All the other sensors, like potentiometers and thermocouples, have analogue outputs. The data logger again performs the analog-to-digital conversion.

1.2 – Sampling rate

The sampling rate is the data acquisition system's recording frequency.

Although the output from the sensors changes continuously and instantaneously, the data acquisition system records data at prefixed time intervals.

The sampling rate is expressed in Hertz ($\text{Hz} = 1/\text{sec}$). For example if you have a sampling rate of 10 Hertz, it means that the input is read ten times in a second and the time between any two successive readings is 0.1 second.

The MyChron2 has the possibility to configure the sampling rates for the engine and the speed channels. They can be acquired at 5 or 10 Hz.

WARNING. The configuration of the sampling rate is performed directly on the device NOT on the personal computer.
--

1.3 – Data download

The recorded measures are stored inside the non-volatile data logger memory. In order to see or to modify the recorded data they have to be downloaded on the Personal Computer.

A serial communication is necessary to perform the download operation.

After the download operation has been performed the data are available for any graphical representation, for any modification and calculation you like. In short it is possible to analyse data (for a full description of the analysis functions refer to the "Software manual - Analysis").

Chapter 2 – Software: general description

2.1 – Introduction

Here we assume you have a good knowledge of the use of your Personal Computer and of the Microsoft® Windows® 95, Windows® 98 or Windows® 2000 operating systems.

The manual has been written referencing to the Windows® 95 operating system.

2.1.1 - Notational Conventions

This manual uses the following notations:

Example of convention	Description of convention
“Configuration-General...”	Quotation marks enclose menu item in the program.
[OK]	Brackets enclose buttons you find in the program or keys.
<i>MYCHRON.CFG</i>	Italic capital letters are used for file names.
<u>File menu</u>	Underlined letters are used for menu name.
<u><i>Track selection</i></u>	Underlined italic letters are used for operations or windows titles.
Advanced	Blue bold letters are used for the names of the software versions.

2.2 – Getting started

2.2.1 – Before using the MyChron2 system

The time invested before using the MyChron2 data logger and the Race Studio software for the first time produces more accurate data and a more reliable system.

Install the data logger, the sensors and the cables on the vehicle and the software on your Personal Computer well in advance of the departure to the track, in case problems arise they can be solved.

Learn the analysis section of the Race Studio software with the examples given with the program (see also the “Software manual – Analysis”).

Make a few trial runs of recording and downloading data in the shop.

2.2.2 – Race Studio concepts

Tests

The Race Studio software stores data downloaded from the data logger in files, they are defined by the program **tests**.

The user at the end of the download operation gives the name of the tests. Changing the name of the tests outside the Race Studio software may cause the tests to be no more recognised by the program.

Track

The tests are recorded into directories created and named by the user; the Race Studio software defines these directories as **tracks**. When you create a new track the best thing to do is to name it as the real track where you are, for example: Monza, Laguna Seca or Brands Hatch.

The Race Studio software has always an active track, shown inside the status bar of the application, see Fig. 2.3. The status bar is placed at the bottom of the screen.

The data from the data logger is downloaded inside the active track; moreover the test to analyse is selected among the ones in the active track.

The first time the program runs the track FORMULE, installed during the setup, is made active.

The track creation can be fulfilled selecting the “Track-New...” command from the *main menu* or the first time the “Download” operation is performed, every time the program is run. When a new track is created it becomes automatically the active one.

Configuration

The settings as a whole are named **configuration**. There is a configuration on the MyChron2 and another one on the personal computer. The one on the MyChron2 is directly set in the device and is explained in the MyChron2 manual the one on the personal computer is recorded in a file named *MYCHRON.CFG* and is explained in this manual.

Channels

The Race Studio software allows analysing two different kinds of measures: *Input channels* and *Math channels*.

The *data logger acquires the Input channels* (for example speed or exhaust gas temperature).

For the **Advanced** version the *user defines the Math channels* and the program calculates them on the Personal Computer using the *Input channels* or the *Math channels* themselves (examples of math channels are linear acceleration or gear number).

For the **Standard** version *the Math channels are predefined* (for example the gear number is already defined in the program).

2.2.3 - The Race Studio folders organisation and files

The set-up software creates the folders’ organisation shown in Fig. 2.1.

The BIKE, FORMULE and KARTING directories include respectively a motorcycle, a car and a kart example. The track1 ... trackn directories are the ones created by the user.

The Manuals folder includes all the program documentation files.

Besides the following files are copied into the installation directory (it may be selected during the software installation, the default is \Programs\Aim\RaceStudio).

Name	Description
<i>Race Studio.exe</i>	Executable file: the application.
<i>Race Studio.ini</i>	Initialisation file: it configures the application.
<i>Channels.cfg, Mini.cfg, Gold.cfg, Expert.cfg, MyChronPro.cfg, MyChron.cfg</i>	Initialisation files: they configure the acquisition parameters for the data loggers.
<i>MathAd.ini or MathStd.ini</i>	Initialisation files: they configure the math channels, depending on the installed version of the software.
<i>EnglishUI.dll, ItalianUI.dll</i>	Language localisation files.
<i>Readme.txt</i>	Text file: short description of differences from previous version.
<i>Pdf.ocx</i>	ActiveX file for the manuals' visualisation.
<i>Mfc42.dll</i>	Library file for the application
<i>Files with the "pdf" extension</i>	Documentation files: the manuals of the program in the MANUALS folder.

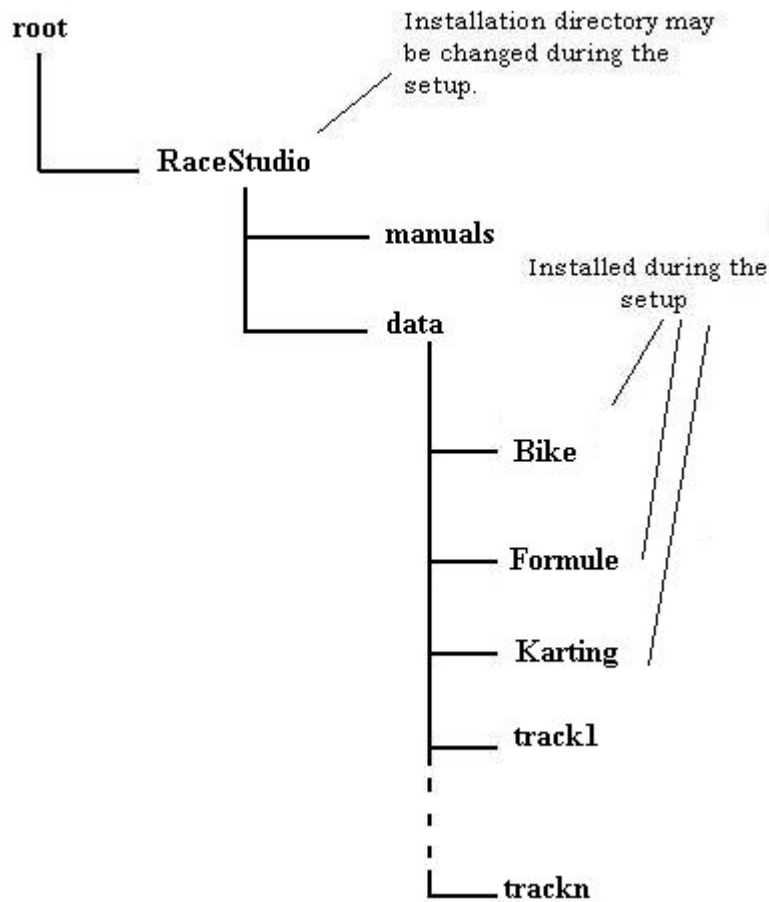


Fig. 2.1 – Directories organisation

2.2.4 – Run the program

Run the program with a double click of the left button of the mouse over the shortcut to the Race Studio software on the desktop of your computer, the shortcut has been created by the installation program. Otherwise run it from the Programs menu into the Start menu.

2.2.5 – MyChron2 device selection

When you run the program first of all make sure that the selected device is the MyChron2.

The name of the selected device is written in red colour, the others are black coloured, in the *main window* (for a description of the *main window* refers to chapter 2.3.1).

For the selection of the MyChron2 device click over the name with the left button of the mouse or move the cursor with the arrow keys and when it is over the MyChron2 button press the [Enter] key.

2.2.6 – Language selection

The Race Studio software allows selecting the language of the user interface.

When the program is run for the first time it loads automatically the language set on your computer, if the language is not provided the English is loaded. If you want to change the language of your computer run “Control panel-International settings” and refer to the Windows® user manual.

It is possible to change the selected language, from the main menu of the software choose the “Configuration-General” command and then select the desired language, the program shows the allowed ones. If the selection has been changed for its activation it is necessary to exit the program and run it again.

2.3 Functionality

The Race Studio software includes all the functions for the configuration and communication with the data logger. This chapter gives a description of all the main functions provided by the software.

Before to start describing the program functionality it is necessary to outline the first window shown when the software is run: it is the *main window*.

2.3.1 – Main window

The *main window* is the first window shown when the program is run. In Fig. 2.2 the default *main window* for a video resolution bigger than 800x600 is displayed.

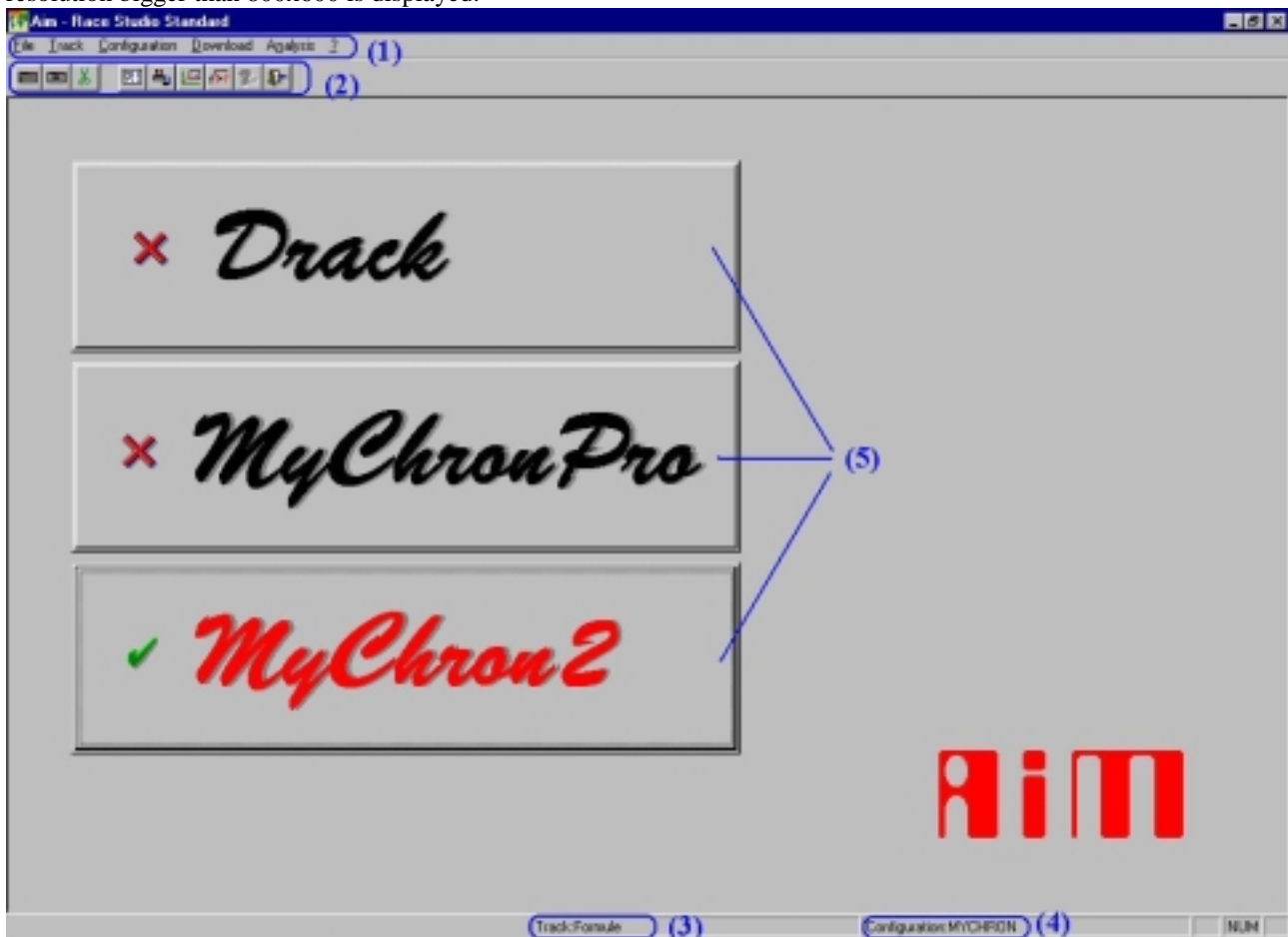


Fig. 2.2 – Main window

The most important areas in the window are:

- (1) – The menu includes the main commands of the program.
- (2) – The toolbar of the window includes some shortcuts to the most important functions.
- (3) – The name of the active Track shown on the status bar.
- (4) – The name of the active Configuration shown on the status bar.
- (5) – The three “big” buttons for the selection of the connected device, in Fig. 2.2 the MyChron2 is the selected device.



The main toolbar includes nine buttons for some of the most used commands of the *main menu*.

Starting from the left they run the following commands:

- 1) Backup of tests and maps on floppy disk,
- 2) Restore tests and maps from floppy disk,

- 3) Delete tests and maps,
- 4) Configuration of the input channels,
- 5) Download from the data logger,
- 6) Run the analysis,
- 7) Configuration of the math channels,
- 8) Show this manual,
- 9) Exit the program.

2.3.2 – Math channels

The math channels are the channels calculated by the personal computer after data have been downloaded. Their calculation depends on the software version.

2.3.2.1 – *Standard* version

In the **Standard** version of the software the math channels are predefined in the program and the user can decide to calculate them or not.

The most part of the math channels can be calculated both at the end of the download operation and during the analysis of the data; some others can be calculated only in the analysis.

Table 1 shows the list of the provided math channels and the channels necessary to their calculation.

Name	Description	Channels necessary to the calculation	Parameters
Linear Acceleration	The vehicle acceleration in the motion direction	Speed.	None.
Wheel Power	The available engine power.	Speed.	Vehicle weight.
Slip Factor	The ratio between the reference speed and the engine rpm.	Speed and engine rpm.	None.
Angle	The inclinations angle of bike. Not Available for the MyChron2	Gyro and vertical acceleration.	None.
Gear no.	The gear.	Speed and the engine rpm.	The maximum and minimum really used gear number.
Distance	For every lap is calculated the travelled distance.	Speed.	None.
Time	For every lap is calculated the elapsed time from the start of the lap	None.	None.
Calculated speed	The maximum, the minimum or the average between Speed #1 and Speed #2. This channel can be selected as <i>reference speed</i> . Not Available for the MyChron2	Two speeds input channels.	The algorithm for the calculation
Kus	A representation of understeer/oversteer. It can be calculated only during the analysis (see the “Software manual – Analysis”). Not Available for the MyChron2	Speed, lateral acceleration and steering angle.	The wheel base of the vehicle and the threshold value for the lateral acceleration.
Suspension speed #1, #2, #3, #4	Four derivative channels for the calculation of the suspensions speed. It can be calculated only during the analysis (see the “Software manual – Analysis”). Not Available for the MyChron2	Suspension travels channel.	None.

Table 1: the math channels for the **Standard** version.

The sampling rate of the math channels depends on the sampling rate of the channels used for their calculation. It is automatically fixed by the program at the maximum value among the acquisition frequencies of the needed channels.

All the definitions concerning the math channels are in the *MATHSTD.INI* file.

The function for the management of the math channels can be accessed from the program user interface in two different places:

- From the *Main menu*, with the item “Configuration–Math channels”, described in chapter 3.4.
- From the *Analysis menu*, with the item “Modify–Channels–Math” (see the “Software manual – Analysis”).

2.3.2.2 – *Advanced version*

In the **Advanced** version of the software the user inputs the formula for the calculation of the math channels. The Race Studio math formula interpreter is a general-purpose, full-featured interpreter that works with the natural math language syntax.

Every formula may include identifiers, constants, functions, symbols and operators.

Identifiers are the input or math channels.

Constants are symbolic constants value user defined. For example ACCGRAV = 9.81, acceleration of gravity.

Symbols are “;”, “(“ and “)”.

Provided **functions** and **operators** are described below in Table 2 and Table 3 respectively.

Operator	Parameters	Result
+ (sum)	A,B could be - Integer numbers - Decimal numbers - Identifiers - Constants	A+B
- (subtraction)	A,B could be - Integer numbers - Decimal numbers - Identifiers - Constants	A-B
* (product)	A,B could be - Integer numbers - Decimal numbers - Identifiers - Constants	A*B
/ (division)	A,B could be - Integer numbers - Decimal numbers - Identifiers - Constants	A/B
^ (integer power)	A could be - Integer number - Decimal number - Identifier - Constant B must be - integer number	A^B

Table 2: math formula interpreter operators’ table

Function	Argument(s)	Result
Sqrt(p1)	p1 = channel identifier	The square root of the argument
Exp(p1)	p1 = channel identifier	The exponential of the argument
Log(p1)	p1 = channel identifier	The base 10 logarithm of the argument
Ln(p1)	p1 = channel identifier	The natural logarithm (base e) of the argument
Sin(p1)	p1 = channel identifier	The trigonometric sine of the argument (argument in radians)
Cos(p1)	p1 = channel identifier	The trigonometric cosine of the argument (argument in radians)
Tan(p1)	p1 = channel identifier	The trigonometric tangent of the argument (argument in radians)
Asin(p1)	p1 = channel identifier	The arc, in radians, whose trigonometric sine is the argument
Acos(p1)	p1 = channel identifier	The arc, in radians, whose

		trigonometric cosine is the argument
Atan(p1)	p1 = channel identifier	The arc, in radians, whose trigonometric tangent is the argument
Abs(p1)	p1 = channel identifier	The absolute value of the argument
Deriv(p1)	p1 = channel identifier	The first derivative function of the argument function over time, computed as $(F(t_0 + dt) - F(t_0)) / dt$
Integ(p1)	p1 = channel identifier	The integral function of the argument function, with $t_0 = 0$ as start integration point
Lap_integ(p1)	p1 = channel identifier	The integral function of the argument function, with $t_0 = \text{startlap}$ as start integration point for each lap
Min(p1, p2)	p1,p2 = channel identifier = constant = number	The minimum value between the arguments
Med(p1, p2)	p1,p2 = channel identifier = constant = number	The mean value between the arguments
Max(p1, p2)	p1,p2 = channel identifier = constant = number	The maximum value between the arguments
High_pass(p1,p2)	p1 = channel identifier p2 = constant = number	If $p_1(t) \geq p_2 \rightarrow p_1(t)$ If $p_1(t) < p_2 \rightarrow 0$
Low_pass(p1, p2)	p1 = channel identifier p2 = constant = number	If $p_1(t) \leq p_2 \rightarrow p_1(t)$ If $p_1(t) > p_2 \rightarrow 0$
Band_pass(p1, p2, p3)	p1 = channel identifier p2,p3 = constant = number	If $p_2 \leq p_1(t) \leq p_3 \rightarrow p_1(t)$ Else $\rightarrow 0$
Bit_and(p1, p2)	p1 = raw channel identifier p2 = integer constant = integer number	The logical AND operation between the arguments The function is meaningless if applied to decimal numbers
Bit_or(p1, p2)	p1 = raw channel identifier p2 = integer constant = integer number	The logical OR operation between the arguments The function is meaningless if applied to decimal numbers
Bit_xor(p1, p2)	p1 = raw channel identifier p2 = integer constant = integer number	The logical XOR operation between the arguments The function is meaningless if applied to decimal numbers
Bit_not(p1)	p1 = raw channel identifier	The logical NOT operation of the arguments The function is meaningless if applied to decimal numbers
Time()		It builds a function whose value for each t is the actual lap time, the time calculation is started at the beginning of each lap.
Bike_angle(p1, p2)	p1 = Vertical acceleration channel identifier p2 = Gyroscope channel identifier	The bike inclination angle (degrees)
Slip(p1,p2)	p1 = Engine RPM channel identifier p2 = Speed channel identifier	The slip factor
Gear(p1, p2, p3, p4)	p1 = Engine RPM channel identifier p2 = Speed channel identifier	The gear number (from p3 to p4)

	p3 = minimum gear used along the track (integer number) p4 = maximum gear used along the track (integer number)	
--	--	--

Table 3: math formula interpreter functions table

Using math formula interpreter

First of all, the Race Studio software comes with some predefined math channels we had included as default (they are the same math channels hard-coded in the **Standard** version). These channels have been expressed as standard formulae, and they are totally modifiable by the user. You can use these channels to see how the interpreter works.

The interpreter can be accessed from the program user interface in two different places:

- From the *Main menu*, with the item “Configuration–Math channels”.
- From the *Analysis menu*, with the item “Modify–Channels–Math” (see the “Software manual – Analysis”).

From the *Configuration Menu* you can define all the formulae you need to analyse your data, keeping them ready to use. The “Status field” allows you to Enable/Disable automatic calculation of the channel: you have to choose “Enable” if you want the channel to be automatically computed when you download the test. If you choose “Disable”, the channel will not be computed, but you will be able to enable it later, when you will go in analysis on a particular test (the second place where you can enter the interpreter).

When you enter the interpreter the software will present you the dialog window shown in Fig. 2.3.

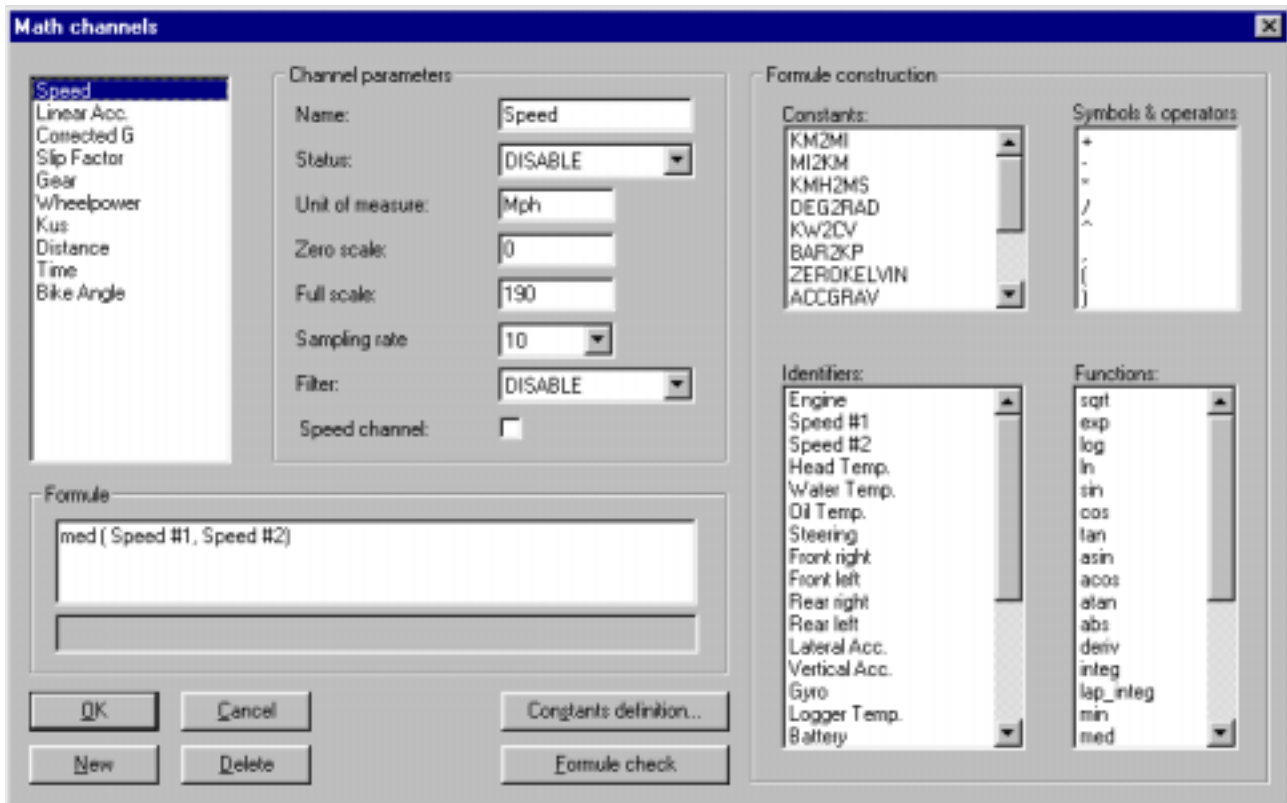


Fig. 2.3 – Math channels for the **Advanced** version

In the left top window you can find the math channels already defined. When you click over a math channel you can see its properties in the “Channel Parameters” pane, and its associated formula in the “Formula” pane.

With the button [Insert] and [Delete] you can insert or delete channels; if you need to modify a channel you simply select it and change the parameters and/or the formula (the channel parameters have the same meaning of the parameters of the input channels configuration).

To change the formula you can either edit manually the string, or use the four panes “Constants”, “Identifiers”, “Symbols & Operators” and “Functions” to build-up automatically the formula. If you double-click on an item of these four panes, the corresponding item is automatically copied in the formula pane.

After finishing to define the formula you should use the button [Formula Check] to check if the formula string has been interpreted correctly.

You can find the result of the elaboration in the grey line below the formula string. If there is something wrong you can see the offending item highlighted in the formula string (try to misspell some identifiers to see how it works).

The meaning of the interpreter panes is:

Constants: the user can define some symbolic constant that loads some common number (such as the acceleration of gravity, or the mass of the vehicle) to be used in the formulae. With the button [Define Constants] you can add, delete and modify the constants. Obviously, in the formulae you can enter either the symbolic constant (ACCGRAV) or the number (9.81) to get the same result.

Identifiers: the identifiers are the names of input and math channels already defined by the user. These are the only channels the interpreter can use to compute the new math channel. If a name is misspelt the interpreter warns you.

Symbols & Operators: this pane contains the five formula operators (+ - * / ^), the comma used as function parameters separator, and the brackets used to define the precedence of operator and functions.

Functions: this pane contains the list of functions supported by the interpreter. It's strongly recommended using this pane to insert functions in the formulae because this way the software automatically inserts also the brackets and the commas needed, indicating also the number of parameters that each function uses.

All the definitions concerning the interpreter are in the *MATHAD.INI* file.

Chapter 3 – Software: main commands

3.1 – Introduction

The main commands are the commands in the *main menu* that is the menu of the *main window*. The *main window* is displayed running the program and it is shown in Fig. 2.2.

3.2 – File commands

The File menu items are: “Backup test”, “Restore test”, “Delete test” and “Exit”.



Backup test

The command allows copying or moving tests and maps files from the selected track to a floppy disk.



Restore test

The command allows restoring tests and maps files from a floppy disk to the selected track.



Delete test

The command allows deleting tests and maps files from the selected track. It is possible to delete tests after they have been copied to a floppy disk selecting this option in the backup dialog window.



Exit

The command exits the Race Studio software.

3.3 – Track commands

The Track commands provided the functions to manage the tracks (directories) where the recorded data are stored. The Track menu items are: “New...”, “Selection...”, “Modify...” and “Delete...”.

New...

This command creates a new track. Running the command the Track description dialog window is shown, see Fig. 3.1. This dialog includes all the information necessary to describe the track.

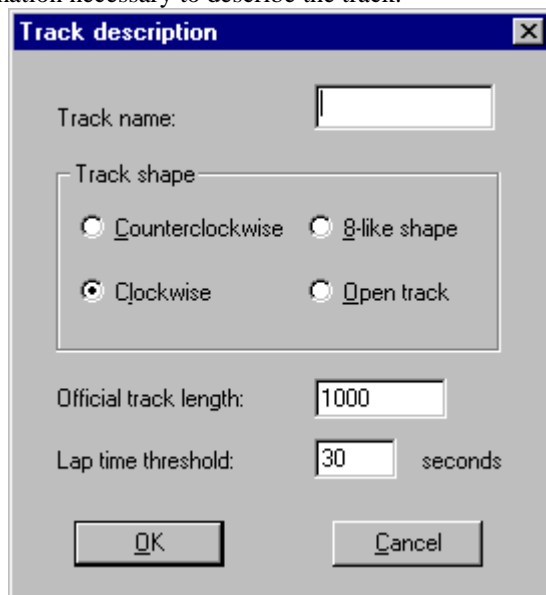


Fig. 3.1 – Track creation

Option/Display	Use
Track name	In this field type the name of the new track (consistent names are suggested). Maximum 12 characters can be input.
Track shape	In this field it is possible to select the shape of the circuit, it is very important to choose the right one for a correct calculation of the map.
Official track length	Input in this field the official length of the track.
Lap time threshold	In this field type the number of seconds under which the best lap is not calculated, the default value is 30 seconds. Input a value that is some seconds less than the one you are expecting
Cancel	Choose this command to leave the window and do not create the new track
Ok	Choose this command to exit the window and to create the new track

WARNING. If a track is created outside the program (for instance with the Windows Explorer) it must be created in the DATA folder of the Race Studio working directory.

Selection...

The command allows setting the active track for the program.

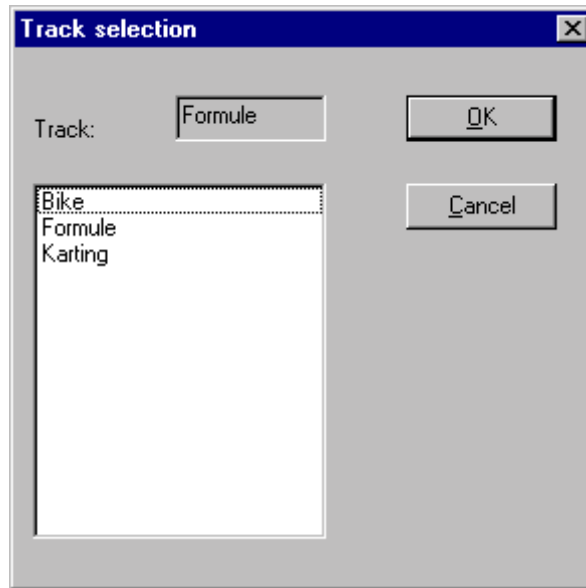


Fig. 3.2 – “Track-Selection...” command: track selection

Option/Display	Use
Track	In this field the active track is shown, all the available tracks are listed below
Cancel	Choose this command to leave the window and do not change the active track
Ok	Choose this command to exit the window and to confirm the selection

Modify...

This command allows modifying the description parameters of the track. Running the command the dialog window of Fig. 3.1 is shown.

See the “New...” paragraph of this chapter for a description of the dialog window.

Delete...

This command allows deleting a track with all the included tests. It is not possible to delete the active track. Running the command a dialog window for the selection of the track to delete is shown.

3.4 – Configuration commands

The configuration commands are divided into two groups, the first is dedicated to the configuration of the program and the second is dedicated to the channels configuration.

The command for the configuration of the program is “General”.

General

In the dialog window shown selecting the command it is possible to select the units of measure for speed and temperatures, the user interface language and the port used for the communications with the logger.

The Fig. 3.3 shows the dialog window for the general configuration.

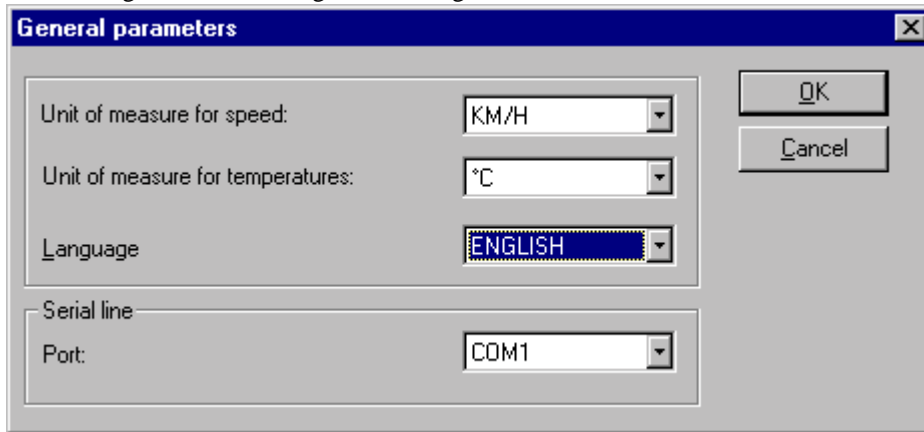


Fig. 3.3 – General configuration

Option/Display	Use
Unit of measure for speed	In this field it is possible to set the unit of measure (km/h or mph) for speed and the corresponding units for distance.
Unit of measure for temperatures	In this field it is possible to set the unit of measure (°C or °F) for temperatures.
Language	In this field it is possible to select the language for the user interface, if the language has been changed exit the program, run it again for the activation of the new selection.
Port	In this field it is possible to select the port used for the communications with the logger (for more information about the serial lines see the documentation of your personal computer)
Cancel	Choose this command to leave the window and do not save the selections.
Ok	Choose this command to exit the window and to confirm the selections.

WARNING. The units of measure for speed and temperatures must be the same of the ones set on the MyChron2.



Input channels

The “Input channels” command allows configuring the “Engine” and the “Speed” channels.

The Fig. 3.4 shows the dialog window displayed for the configuration.

WARNING. The “Input channels” configuration concerns only parameters for the display during the “Analysis”; the parameters for the channels acquisition are set directly on the MyChron2. The only exception is the “Status” field that must congruently set to the really acquired channels.

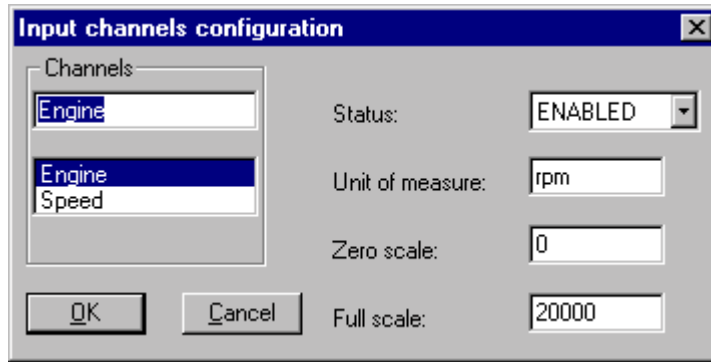


Fig. 3.4 – Input channels configuration

Option/Display	Use
Channels	In this field the channels name is shown. The name can be edited.
Status	In this field select if the selected channel is acquired (select ENABLED) or not (select DISABLED).
Unit of measure	In this field input the unit of measure of the channel. For instance km/h for speed.
Zero scale	In this field input the beginning of the scale for the visualisation of the plot in the Analysis section.
Full scale	In this field input the end of the scale for the visualisation of the plot in the Analysis section.
Cancel	Choose this command to leave the window and do not save the selections.
Ok	Choose this command to exit the window and to confirm the selections.



Math channels

The “Math channels” command allows managing the math channels depending on the installed software version.

Standard version

Selecting the command the dialog window shown in Fig. 3.5 is displayed.

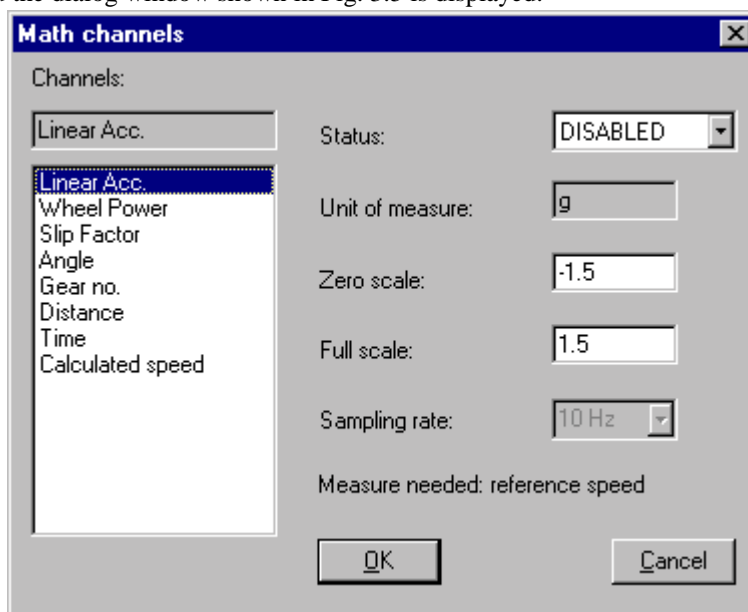


Fig. 3.5 – Math channels configuration for the **Standard** version

Option/Display	Use
Channels	In these fields the name of the selected channel and the list of the available channels are shown. The name of the selected channel cannot be edited.
Status	In this field choice if the selected channel have to be calculated (select ENABLED) or not (select DISABLED) at the end of the downloading operation.
Unit of measure	In this field the unit of measure of the channel is shown.
Zero scale	In this field input the beginning of the scale for the visualisation of the plot in the Analysis section.
Full scale	In this field input the end of the scale for the visualisation of the plot in the Analysis section.
Sampling rate	In this field the readings per second of the channel are shown.
Measure needed	In this field the measures necessary to the calculation of the selected channel are shown.
Cancel	Choose this command to leave the window and do not save the selections.
Ok	Choose this command to exit the window and to confirm the selections.

For more information about the math channels see chapter 2.3.2.1.

Advanced version

Selecting the command the dialog window shown in Fig. 2.3 is displayed.

For a full description of the math channel editor and interpreter see chapter 2.3.2.2.

3.5 – Download command



The “Download” command allows downloading data from the MyChron2 data logger to the Personal Computer memory.

When the “Download” command is selected for the first time the track selection dialog window is shown, see it in Fig. 3.2.

After the selection of the track or the creation of a new one press [Ok], a progressive bar is shown.

When the bar reaches the 100% the download operation is finished and a dialog window named *Test information setting* is shown, see Fig. 3.6. In this dialog window it is possible to input some information describing the test.

The screenshot shows a standard Windows-style dialog box titled "Test information setting". It features a title bar with a close button (X). The main area contains five input fields stacked vertically: "Name (necessary):", "Vehicle:", "Track:", "Driver:", and "Test comments:". The "Test comments:" field is a larger text area. To the right of the input fields are two buttons: "OK" and "Cancel".

Fig. 3.6 – Test information setting

Option/Display	Use
Name (necessary)	Input here the name of the test, maximum twenty characters. This is the name of the file that includes the data of the test and it is also the name you will find when you would like to analyse the data. Warning , the name is necessary.
Vehicle	Input the kind of the vehicle, maximum twenty characters (optional).
Track	Input the name of the track, maximum twenty characters (optional).
Driver	Input the name of the driver, maximum twenty characters (optional).
Test comments	Input any comments you would like, maximum two hundreds characters (optional).
Ok	Choose this command to exit the window and to confirm the input data.
Cancel	Choose this command to leave the window and do not save any modification you made.

All the information input in this window can be modified during the analysis selecting the “Modify-Test-Name” command (see “Software manual – Analysis).

3.6 – Analysis command



The “Analysis” command allows entering the analysis functions described in the “Software manual – Analysis”. When this command is selected the dialog window shown in Fig. 3.7 is displayed.

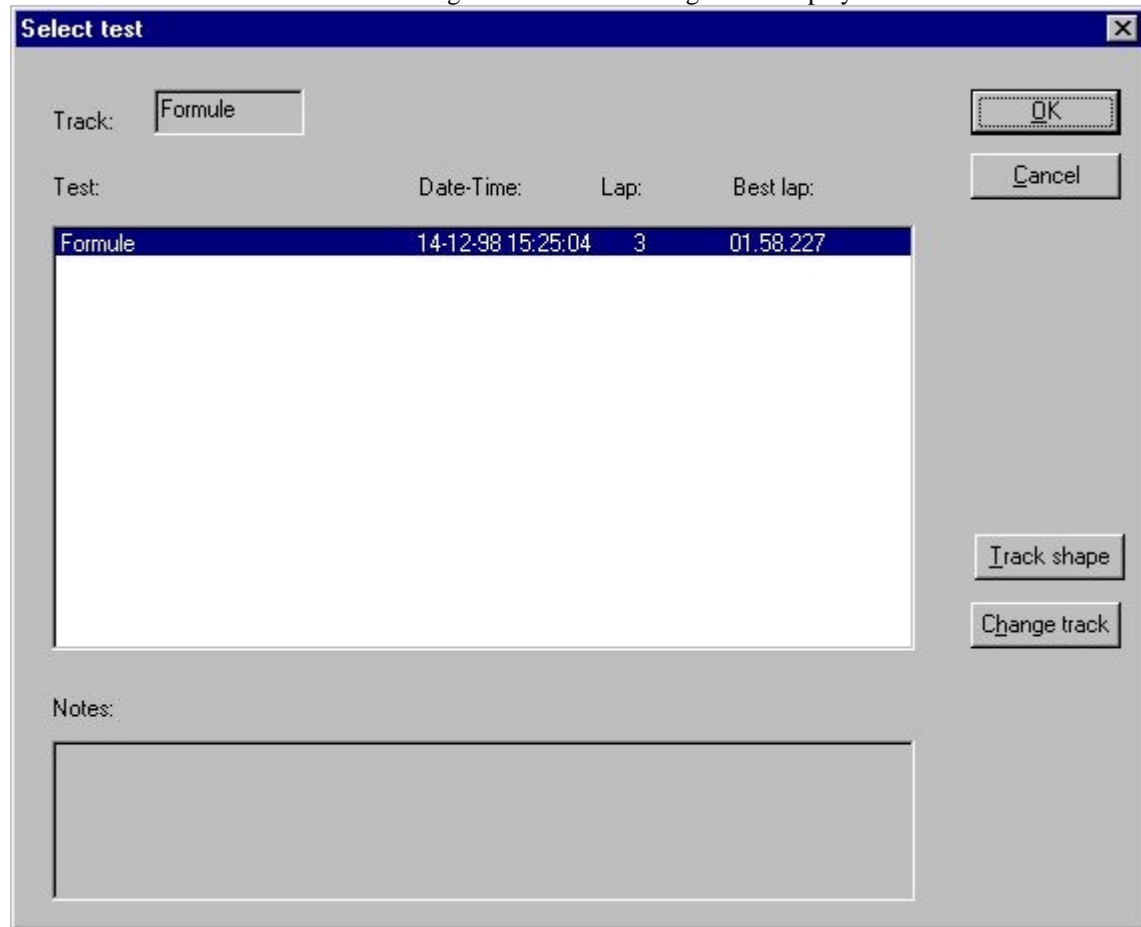


Fig. 3.7 – Test selection

Option/Display	Use
Track	The selected track is shown in this field.
Test	The list of the tests recorded in the track is shown. The recording Date and Time, the number of laps and the best lap for each test are also displayed.
Notes	The notes of the highlighted test are shown in this field.
Track shape	Choose this command to change the characteristics of the track. For more information see chapter 3.3.
Change track	Choose this command to change the selected track, see chapter 3.3.
Ok	Choose this command to confirm the selected test and enter the <i>analysis window</i> .
Cancel	Choose this command to go back to the <i>main window</i> .

3.7 – Help commands

Manual

Running this command this manual in PDF format is displayed.

About Race Studio...

The command shows the version of the Race Studio software running on your Personal Computer and the available resources of the PC.

Chapter 4 – Troubleshooting

4.1 - Data logger does not reply during serial communication

On line operations

1. Check the connections of the cable for the serial communication to the data logger and to the Personal Computer. If the cable has one or more extensions check every connection. The maximum length of the cable has to be 10 metres (32.8 feet).
2. Check the state of charge of the battery powering the data logger (during this operation the data logger must be powered).

Download operation

This trouble happens when the Race Studio program shows an error message during the download, for example the operation does not start. It does not concern the problem “no data has been recorded” (for this problem see below).

1. Check the connections of the cable for the serial communication to the data logger and to the Personal Computer. If the cable has one or more extensions check every connection. The maximum length of the cable has to be 10 metres (32.8 feet).
2. Check the state of charge of the battery powering the data logger (during this operation the data logger must be powered).
3. Remove all the power saving features of the Personal Computer. Performing the operation use the Control Panel of the Windows® operating system. For more details refer to the manual of the operating system installed on your Personal Computer.

4.2 - The data logger did not record data

This information may appear at the beginning of the download operation.

1. Check the voltage of the battery powering the data logger (during this operation the data logger must be connected to the battery).



s.r.l.

Via Cavalcanti 8
20063 Cernusco sul Naviglio – MI
ITALY

Tel. (+39)-(0)2-9290571

Fax. (+39)-(0)2-92118024

<http://www.aim-sportline.com/>