



CUSTOMER DOCUMENTATION	23/09/2005	SOFTWARE	AIM software & USB drivers installation
Notes: "How to install AIM software and the USB drivers". Version 1.12			

This document explains Race Studio 2 and USB Driver installation, but, due to the fact that USB Driver installation procedure is the same for Race Studio 2, as well as for DragAnalyzer and Light Analyzer, also if you always find mentioned Race Studio 2, this procedure fits all AIM Software ("LightAnalyzer", "DragAnalyzer", etc.).

Table of contents

CHAPTER 1 – AIM SOFTWARE COMPATIBILITY WITH OS AND SOFTWARE	2
IMPORTANT NOTE (From Race Studio 2.20.07 onward):	2
COMPATIBILITY NOTE	2
CHAPTER 2 – SOFTWARE INSTALLATION UNDER WINDOWS XP	3
2.1 <i>Warning for "Race Studio 2" First Installation - Windows XP all versions</i>	<i>3</i>
2.2 <i>"Race Studio 2" First Installation with Windows XP</i>	<i>5</i>
2.3 <i>"Race Studio 2" Upgrading with Windows XP</i>	<i>9</i>
CHAPTER 3 – RACE STUDIO 2 INSTALLATION WITH WINDOWS 2000	10
3.1 <i>"Race Studio 2" First Installation with Windows 2000</i>	<i>11</i>
3.2 <i>"Race Studio 2" Upgrading with Windows 2000</i>	<i>13</i>
CHAPTER 4 – RACE STUDIO 2 INSTALLATION WITH WINDOWS 98 / ME	15
4.1 <i>"Race Studio 2" First Installation with Windows 98</i>	<i>16</i>
4.2 <i>"Race Studio 2" Upgrading with Windows 98</i>	<i>18</i>
CHAPTER 5 – RACE STUDIO 2 REMOVAL PROCEDURE	19
CHAPTER 6 - USB DRIVERS TROUBLESHOOTING	20
CHAPTER 7 –WINDOWS 98™ TROUBLESHOOTING.....	23
CHAPTER 8 –RACE STUDIO 2 VISUALIZATION PROBLEMS	26

NOTE: before installing both software and USB drivers, please read carefully this documentation. Incorrect installations may result in system malfunctions.

Chapter 1 – AIM software compatibility with OS and software

Software and USB drivers requires at least Windows 98, or Windows 2000 to work properly.

AIM software has been designed and developed to guarantee the maximum working reliability and its proper working has been tested with the following operative systems:

- Microsoft Windows 98™ (First Edition)
- Microsoft Windows 98™ SE (Second Edition)
- Microsoft Windows 2000™
- Microsoft Windows Me™
- Microsoft Windows Xp™

The following OS are NOT supported by Race Studio 2:

- Microsoft Windows 95™
- Microsoft Windows NT
- All “NON Microsoft” Operative Systems

Please note: AIM software support Microsoft Windows 98 (First and Second Edition) only if the user follows carefully all procedures described in chapter “[Windows 98™ troubleshooting](#)”. Due to the lack of some components for the database management, it is absolutely necessary to update Windows 98 First Edition, and we strongly recommend you to do the same for Microsoft Windows 98 Second Edition too.

IMPORTANT NOTE (From Race Studio 2.20.07 onward):

If you have an AntiSpyware software installed and running, you will notice that your computer can be very slow opening DaVid Video configuration; this has been verified with Microsoft AntiSpyware Beta 1 Release. We thereby suggest you to close this application while running **Race Studio 2** software for DaVid configuration. We can guarantee you that this software is not going to output undesired information.

COMPATIBILITY NOTE

If you have installed **Race Studio 2.17.17 or previous** and you are using an AIM instrument you bough from January 2005 onward you need to install **Race Studio from release 2.20.00 onward**. To know which is the latest **Race Studio 2** release, please check our website: www.aim-sportline.com, where all latest software and firmware releases are freely downloadable.

If for any reason you wish to save your old **Race Studio 2** together with the new one (we would anyway recommend you not to do so), please install the new version on an hard disk different from the one you installed the old version on. You find the explanation on how to do this in the following chapters related to the installation under different operative systems.

If you have a Drack instrument, please install Race Studio 2.16.04 (the last version that supports Drack). You can download it from our website www.aim-sportline.com. This version of Race Studio 2 does not go in conflict with Race Studio 2.20.00 or later.

To keep booth versions of the software you need to follow this procedure (EXPERT USERS ONLY): click on windows explorer and browse the hard disk where your latest Race Studio 2 release is installed. You will find a folder named AIM: rename it for example AIM_RS_New). Afterward browse it and create a shortcut of RaceStudio2.exe file on your desktop. Now you can install Race Studio 2.16.04 and you will have both software versions.

Chapter 2 – Software installation under Windows XP

Please note: this installation procedure is only valid for:

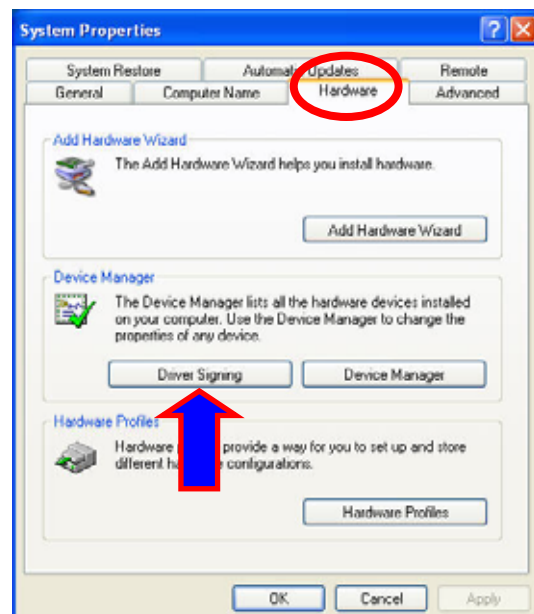
- **Race Studio 2 - 2.20.00 version or later.**
- **Drag Analyzer - 1.05.00 version or later**
- **Light Analyzer - 1.01.00 version or later**

Before starting **Race Studio2** installation, please close all applications.

2.1 Warning for “Race Studio 2” First Installation - Windows XP all versions

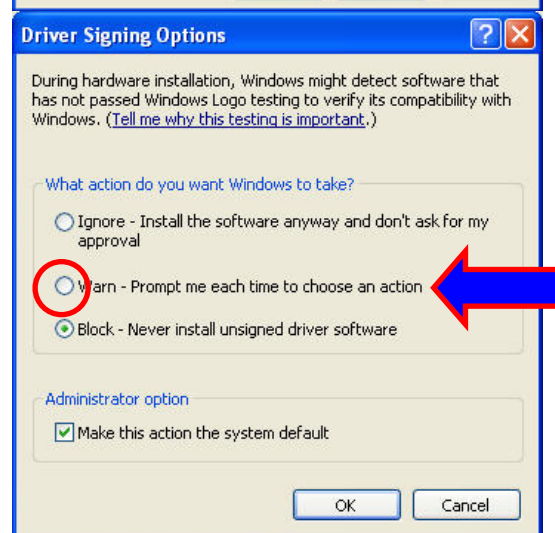
If you are installing **Race Studio 2** under Windows XP Operative system (both Professional and Home edition), before starting **Race Studio 2** installation, we recommend you to check an important default setting.

Go in System Properties windows. Click on: Start/Settings/Control Panel/System and select Hardware Layer (red circled in the figure on the right). Click on Driver Signing option (highlighted with a red/blue arrow in the figure on the right)



The widow on the right appears. This windows concern Windows XP default installation settings. If, as in the figure on the right, “*Block – Never install unsigned driver software*” checkbox is enabled, please enable “*Warn – Prompt me each time to choose an action*” checkbox (highlighted with a red/blue arrow and red circled in the figure on the right) and click on “OK” button.

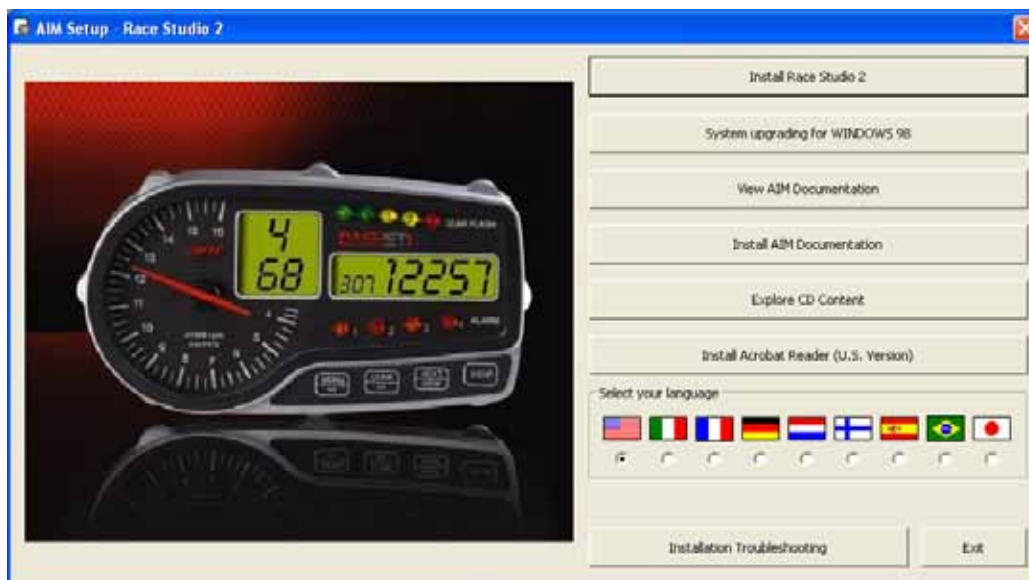
Please note: if you leave “*Block – Never install unsigned driver software*” checkbox enabled the system will never allow you to install any driver that does not have Windows signature.



Now You can start **Race Studio 2** Installation

You may install **Race Studio 2** in two different ways:

- **Race Studio 2** was downloaded from our website: in this case, to install it double-click on **RS_220xx_yymmdd_WEB.exe** file (where xx is for the release number and the letters yymmdd represent the date of the file, year, month and day) ;
- you received from AIM a CD-ROM including the software. In this second case, please **insert the CD in the CD-ROM drive**: installation starts automatically. The screenshot below appears. Please select “**Install Race Studio 2**”



Race Studio 2 first installation screenshot.

- In case AUTOPLAY function for CD-ROM is disabled (rarely), please browse the CD-ROM and double-click on the file Setup.exe.

As installation starts you are requested to choose the installation language.

You may choose among these 5 languages: Italian, English, French, German and Spanish.

Once selected the desired language, please press **OK** button.



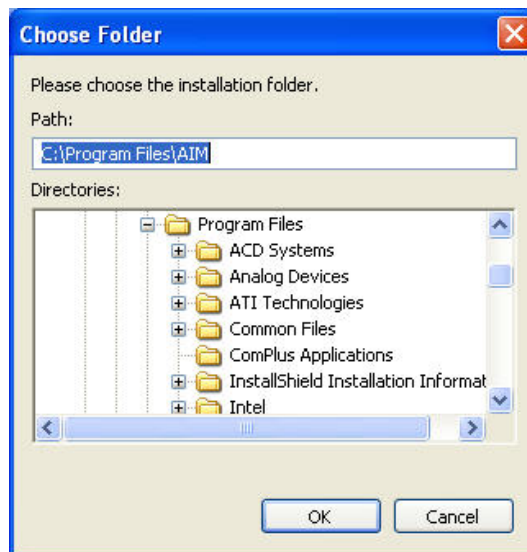
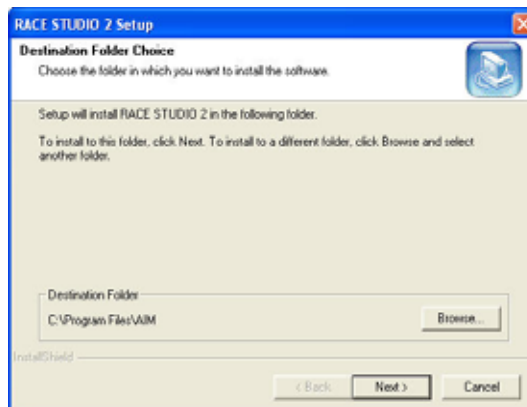
2.2 “Race Studio 2” First Installation with Windows XP

The window on the right is prompted.

- Please click on *Next* button
- If you want to install **Race Studio 2** on a destination folder different from the default one, please click on “Browse” button and the next window appears.

This window allows you to choose your software installation folder.

This can be useful if you are installing a new release of the software and you want to keep the old one. In this case, please select an installation destination folder different from the one where your old **Race Studio 2** release is installed.



The window on the right appears.

The system informs you that the *First Installation* is going to begin.

Please do not connect any logger to USB port until all installation is completed.

Please disconnect any USB cable from PC USB port if any one is connected and push “*START*” button.



Please close any other application if any one is open and click “*START*” button.



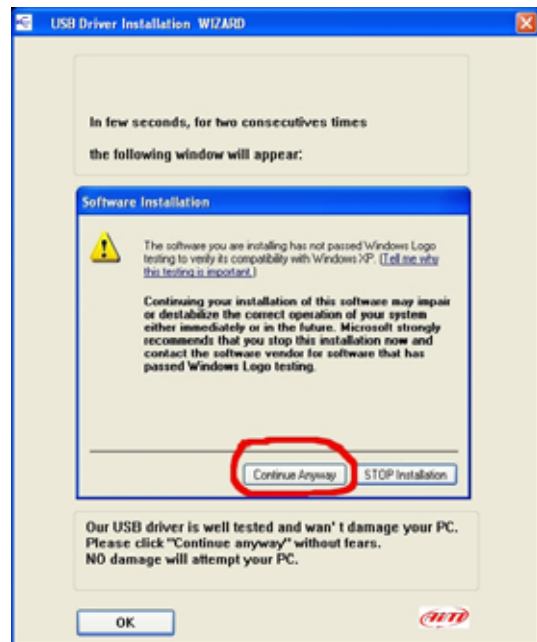
The window on the right appears.

The system informs you that in a few seconds “Software Installation” window appears **twice**. This last window is a Windows™ message that informs that your software has not passed Windows™ logo testing.

Please note: AIM USB Driver is well tested and won't damage your PC.

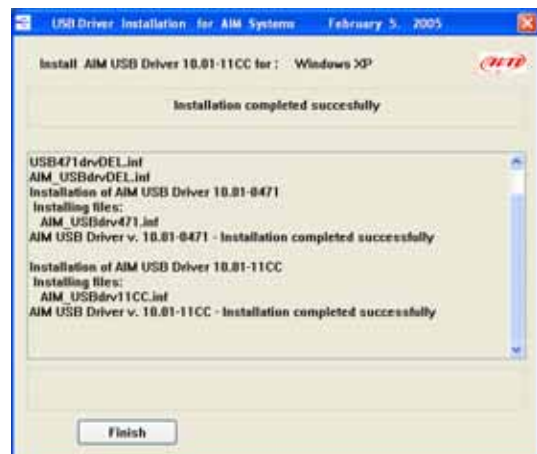
Please click on “Continue Anyway” button without fears.

No damage will attempt your PC.



The system notifies you that installation has been completed successfully.

Please click on “Finish” button.



The system informs you that USB Driver pre-installation is completed.

Now you can connect your USB cable to the PC and switch the logger on.

In a few seconds the USB Driver wizard starts. At first dialog window, please click “YES” button; afterwards “Software Installation” window appears again.

As said before, please click on “Continue anyway” button without fears. **No damage will attempt your PC.**

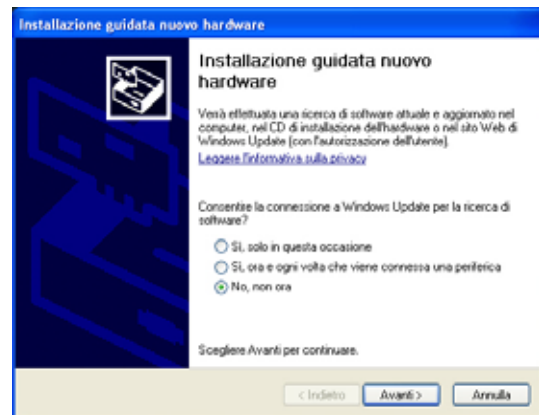


Two following callouts appears on the right bottom corner of your desktop; the system notifies you that a New Hardware, an USB Device, has been found.



The window you see on the right asks you if you wish the system goes on the web to find a proper driver for your USB device.

It appears only with the newest Window XP Editions. Please enable “not, not now” option and click on Next button.



Found New Hardware Wizard window appears. Please enable “Install the software automatically (Recommended)” checkbox and click on “Next>” button.



The systems warns you that the software you are installing has not passed Windows logo testing to verify its compatibility with **Windows XP™**. As said before, please press “Continue anyway” button without fears.

No damage will attempt your computer.



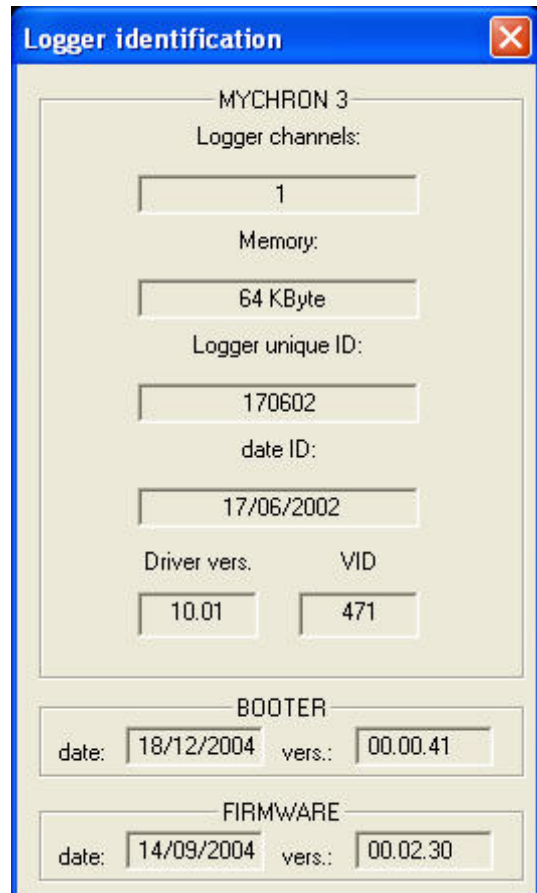
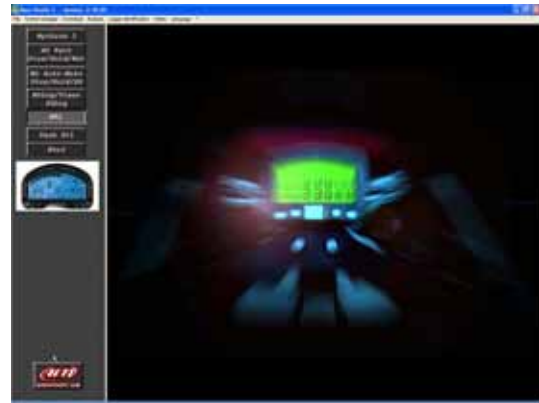
The system notifies you that wizard has finished installing the software for AIM USB Driver. Please press “Finish” button.



To check that everything is OK, please run **Race Studio 2** Software (for Race Studio 2 users only) and click on “*Logger Identification*” on the top toolbar.

Logger Identification window, shown on the right, appears.

As you can see, on the first row of the window is written your instrument name: **MyChron 3 Basic** in this example.

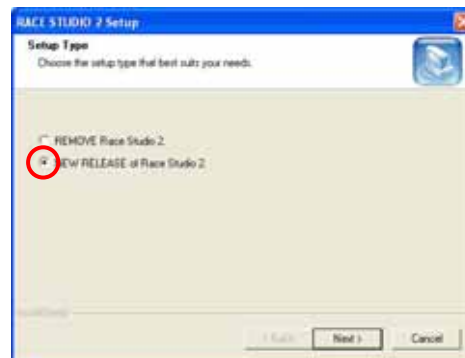


2.3 “Race Studio 2” Upgrading with Windows XP

The screenshot on the right appears; you are given two options:

- REMOVE Race Studio 2 and
- NEW RELEASE of Race Studio 2

Please select the second option as in the figure on the right and press “Next>” button.



The window on the right appears. You are asked to restart your Pc.

Please do so.



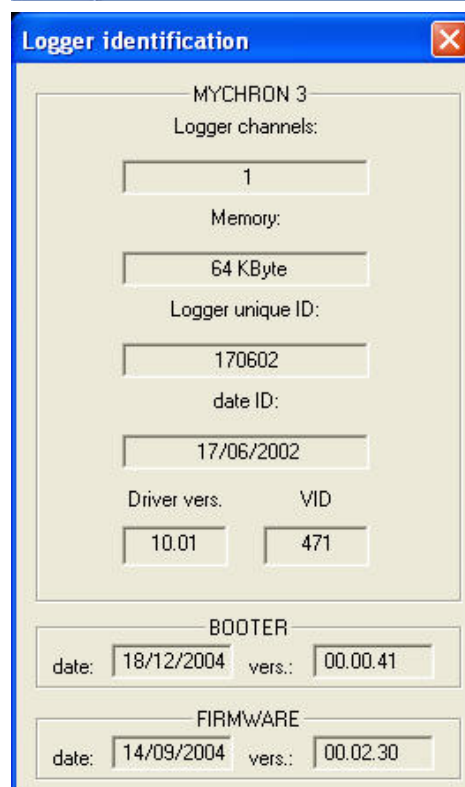
To check that everything is OK, please run **Race Studio 2** software (for Race Studio 2 users only).

The window on the right appears. Please click once on “Logger Identification” on the top toolbar.



Logger Identification window, shown on the right, appears.

As you can see, on the first row of the window is written your instrument name: **MyChron 3 Basic** in this example.



Chapter 3 – Race Studio 2 installation with Windows 2000

Please note: this installation procedure is only valid for:

- **Race Studio 2 - 2.20.00 version or later**
- **Drag Analyzer - 1.05.00 version or later**
- **Light Analyzer - 1.01.00 version or later**

If you have a Drack instrument, please install Race Studio 2.16.04 (the latest version that supports Drack). You can download it from our website www.aim-sportline.com. We can guarantee you that this version of Race Studio 2 does not go in conflict with Race Studio 2.20.00 or later. You will simply have two different icons on your desktop.

Before starting installation of **Race Studio 2**, please close all applications.

You may install Race Studio 2 in two different ways:

- **Race Studio 2** was downloaded from our website: in this case, to install it please double-click on **RS_220xx_yymmdd_WEB.exe** file (where xx is for the release number and the letters yymmdd represent the date of the file, year, months and day);
- you received from AIM a CD-ROM including the software. In this second case, please **insert the CD in its CD-ROM drive**: installation starts automatically. The screenshot below appears. Please select “**Install Race Studio 2**”



Race Studio 2 first installation screenshot

- In case AUTOPLAY function for CD-ROM is disabled (rarely), you have to browse the CD-ROM and double-click on the file Setup.exe.

As installation starts you are requested to choose the installation language.

You may choose among these 5 languages: Italian, English, French, German and Spanish.

Once the desired language selected, please press **OK** button.



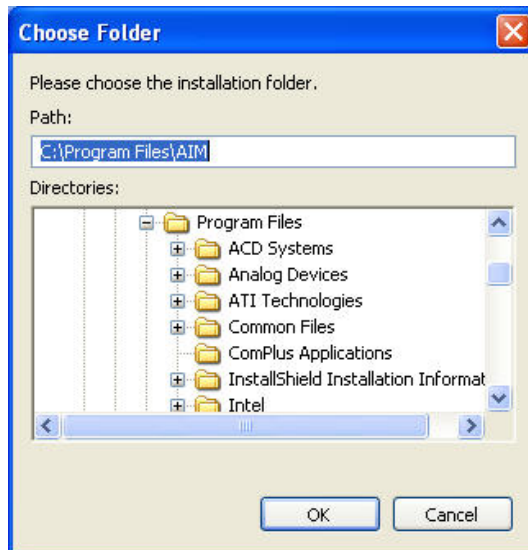
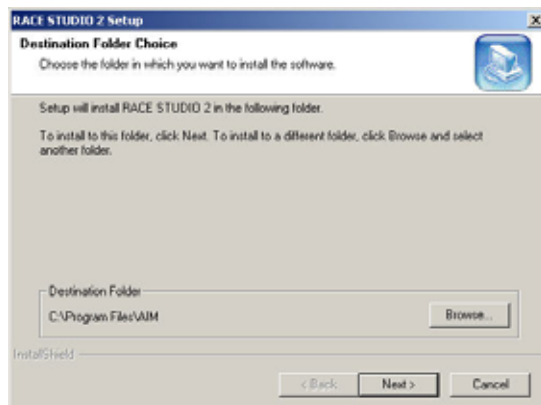
3.1 “Race Studio 2” First Installation with Windows 2000

The window on the right is prompted.

- Please click on “Next” button
- If you want to install **Race Studio 2** on a destination folder different from the default one, please click on “Browse” button and the next window appears.

This window allows you to choose your software installation folder.

This can be useful if you are installing a new release of the software and you want to keep the old one. In this case, please select an installation destination folder different from the one where your old **Race Studio 2** release is installed.



The system informs you that this is the first installation for AIM USB Driver. You must install USB-Driver before running **Race Studio 2**. Please do not connect any logger USB until USB Driver is installed, so unplug USB logger if any is connected.

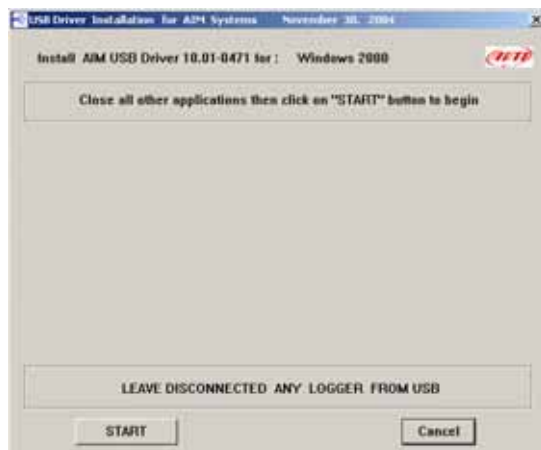
Please click on “START” button.



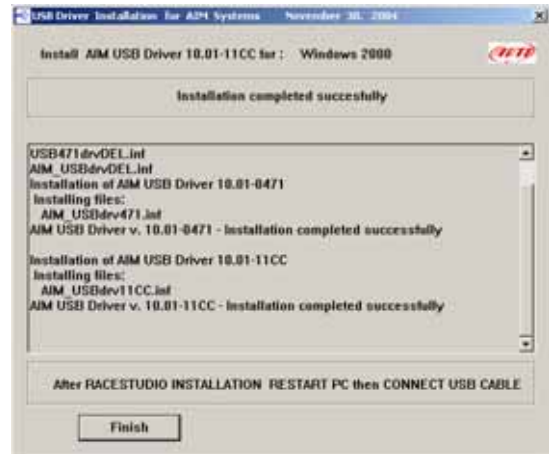
Once Race Studio 2 has been correctly installed, automatic installation of the USB driver starts.

The window on the right appears. You are asked to close all applications and click “START” button. Please do so.

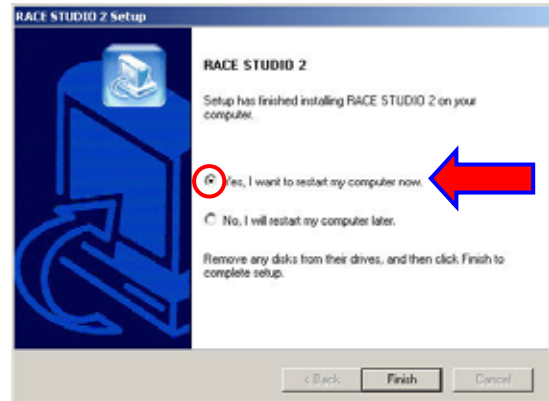
Please note: your logger must not be connected to the Pc USB port until requested. So do not connect it to your Pc now.



The system informs you that installation has completed successfully. Please click on “*Finish*” button.



The system notifies you that installation has completed. Please enable “*Yes, I want to restart my computer now*” checkbox and press “*Finish*” button.



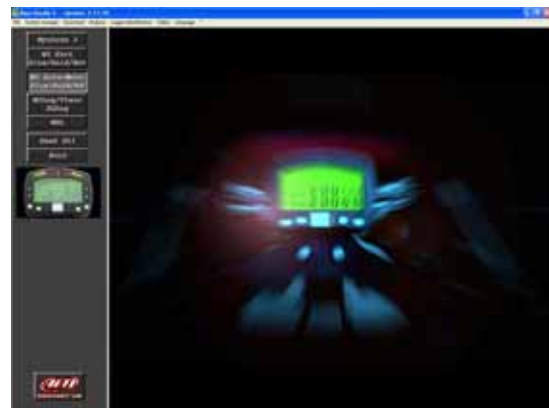
Now the system re-starts your Pc.

After re-start, please connect your logger to the Pc and switch it on.



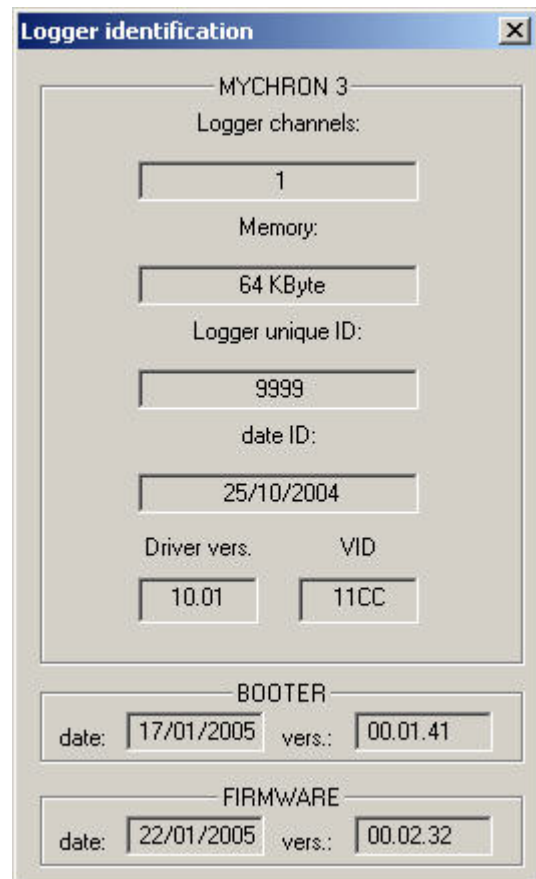
The Pc notifies you that a New Hardware, USB device, has been found; USB Driver installation runs automatically.

To check that all works properly, please run **Race Studio 2** software (for Race Studio 2 users only) and click on “*Logger Identification*” on the top toolbar.



Logger Identification window, shown on the right, appears.

As you can see, on the first row of the window is written your instrument name: **MyChron 3 Basic** in this example.



3.2 “Race Studio 2” Upgrading with Windows 2000

The screenshot on the right appears; you are given two options:

- REMOVE Race Studio 2 and
- NEW RELEASE of Race Studio 2

Please select the second option as in the figure on the right and press “Next>” button.



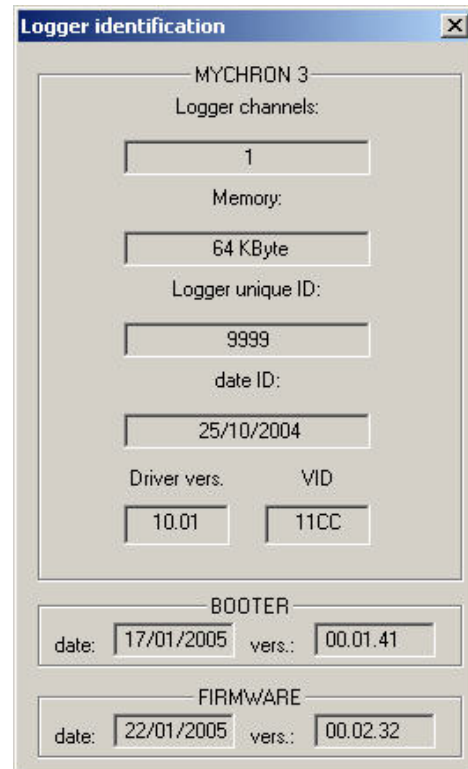
The window on the right appears. You are asked to restart the Pc.
Please do so.



To check that all works properly, please run **Race Studio 2** software (for Race Studio 2 users only) and click on “*Logger Identification*” on the top toolbar.

Logger Identification window, shown on the right, appears.

As you can see, on the first row of the window is written your instrument name: **MyChron 3 Basic** in this example.



Chapter 4 – Race Studio 2 installation with Windows 98 / Me

Please note: this installation procedure is only valid for:

- Race Studio 2 - 2.20.00 version or later
- Drag Analyzer - 1.05.00 version or later
- Light Analyzer - 1.01.00 version or later

If you have a Drack instrument, please install Race Studio 2.16.04 (the last version that supports the Drack). You can download it from our website www.aim-sportline.com. We can guarantee you that this version of Race Studio 2 does not go in conflict with Race Studio 2.20.00 or later. You will simply have two different icons on your desktop.

Before starting installation of **Race Studio 2**, please close all applications.

You may install Race Studio 2 in two different ways:

- **Race Studio 2** was downloaded from our website: in this case, to install it please double-click on **RS_220xx_yymmdd_WEB.exe** file (where xx is for the release number and the letters yymmdd represent the date of the file, year, month and day);
- you received from AIM a CD-ROM including the software. In this second case, please **insert the CD in your CD-ROM drive**: the installation starts automatically. The screenshot below appears. Please select “**Install Race Studio 2**”



Race Studio 2 first installation screenshot

- In case AUTOPLAY function for CD-ROM is disabled (rarely), you have to browse the CD-ROM and double-click on the file Setup.exe.

As installation starts you are requested to choose the installation language.

You may choose among these 5 languages: Italian, English, French, German and Spanish.

Once the desired language selected, please press **OK** button.



4.1 “Race Studio 2” First Installation with Windows 98

The window on the right is prompted.

- Please click on “Next” button.
- If you want to install **Race Studio 2** on a destination folder different from the default one, please click on “Browse” button and the next window appears.

This window allows you to choose your software installation folder.

This can be useful if you are installing a new release of the software and you want to keep the old one. In this case, please select an installation destination folder different from the one where your old **Race Studio 2** release is installed.

The system informs you that this is the first installation for AIM USB Driver. You must install USB-Driver before running Race Studio 2. Please do not connect any logger USB until USB Driver is installed, so unplug USB logger if any is connected.

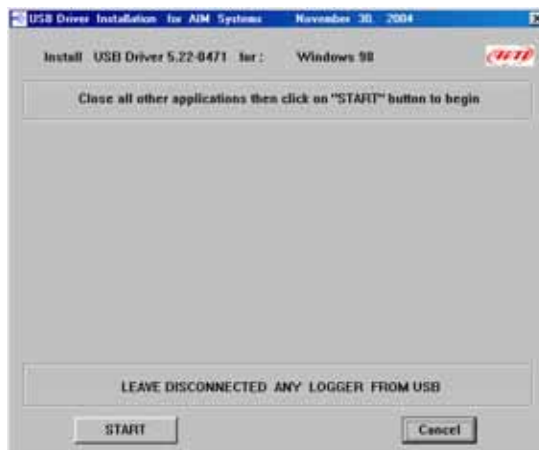
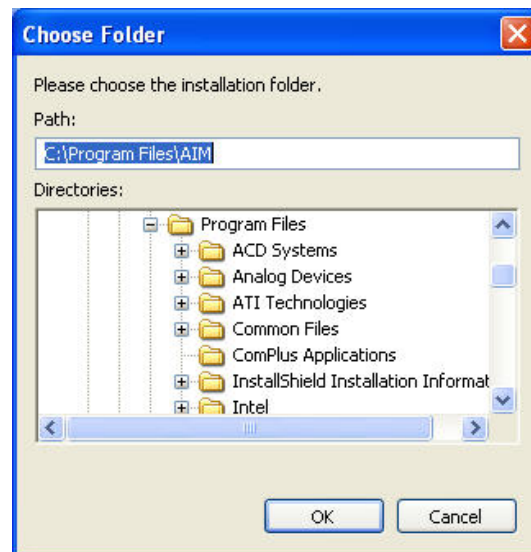
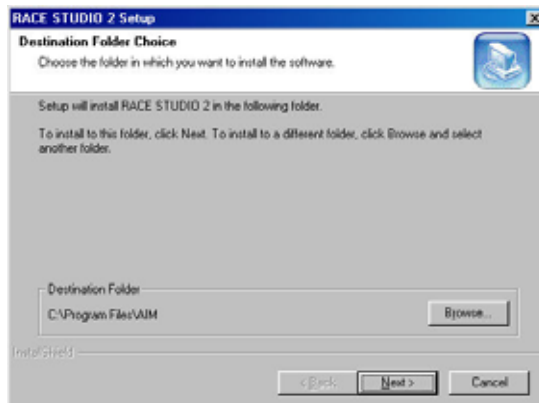
Please click on “START” button.

Once Race Studio 2 has been correctly installed, automatic installation of the USB drivers starts.

The window on the right appears. You are asked to close all applications and click on “START” button.

Please do so.

Please note: your logger must not be connected to the Pc USB port until requested. So do not connect it to your Pc now.

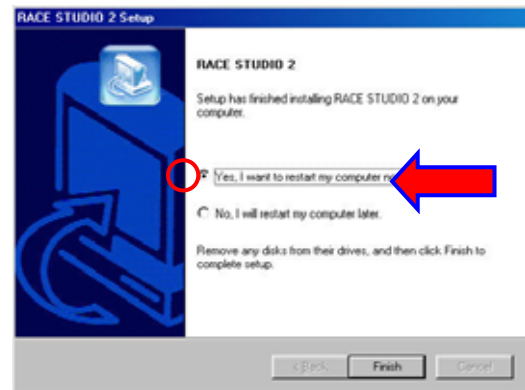


The system informs you that Installation has completed successfully. Please click on “*Finish*” button.



The system notifies you that installation has completed.

Please enable “*Yes, I want to restart my computer now*” checkbox and press “*Finish*” button.



Now the system re-starts you Pc.

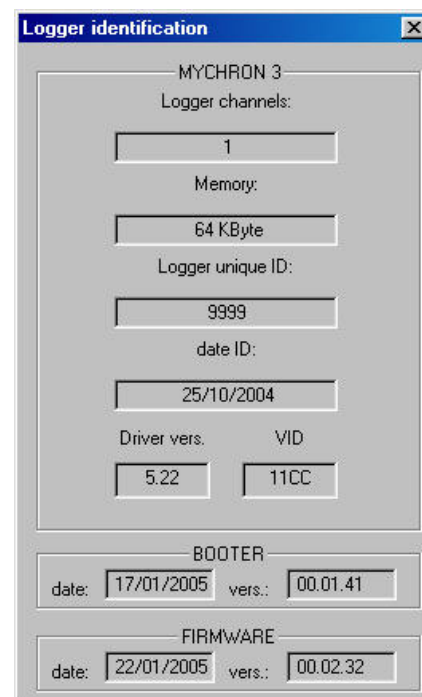
After re-start, please connect your logger to the Pc and switch it on.

To check that all works properly, please run **Race Studio 2** software (for Race Studio 2 users only) and click on “*Logger Identification*” on the top toolbar.



Logger Identification window, shown on the right, appears.

As you can see, on the first row of the window is written your instrument name: **MyChron 3 Basic** in this example.



4.2 “Race Studio 2” Upgrading with Windows 98

When the software installation starts, you are given two options:

- REMOVE Race Studio 2 and
- NEW RELEASE of Race Studio 2

Please select the second option as in the figure on the right and press “Next>” button.



The system informs you that New version of RACE STUDIO 2 has been successfully installed.

Please be sure that “Yes, I want to restart my computer now” checkbox is enabled and press “Finish” button.

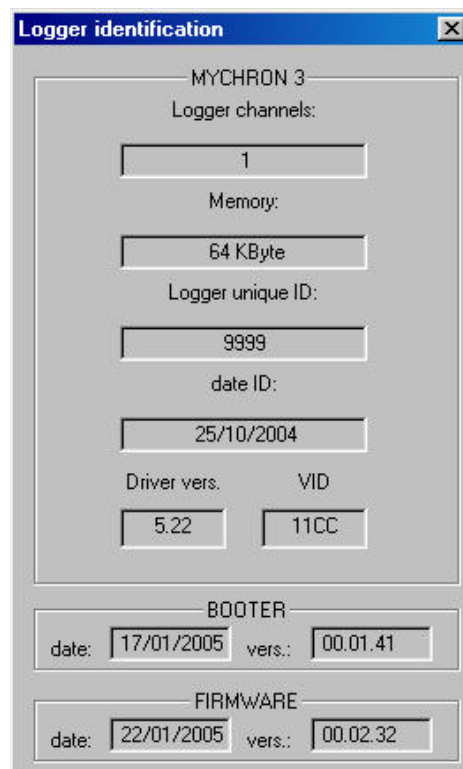


To check that all works properly, please run **Race Studio 2** software (for Race Studio 2 users only) and click on “Logger Identification” on the top toolbar.



Logger Identification window, shown on the right, appears.

As you can see, on the first row of the window is written your instrument name: **MyChron 3 Basic** in this example.



Chapter 5 – Race Studio 2 removal procedure

If you wish to remove Race Studio 2 from your PC, click **Start / Settings / Control Panel / Add-Remove Programs**.

The screenshot on the right appears.

Select Race Studio 2 among the available software and press button “*Change/Remove*”.



The screenshot on the right appears.

Enable the checkbox “REMOVE Race Studio 2” and press button “*NEXT*”.

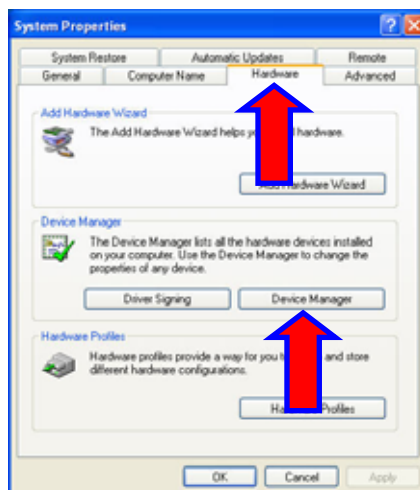
The software is automatically removed from your PC.



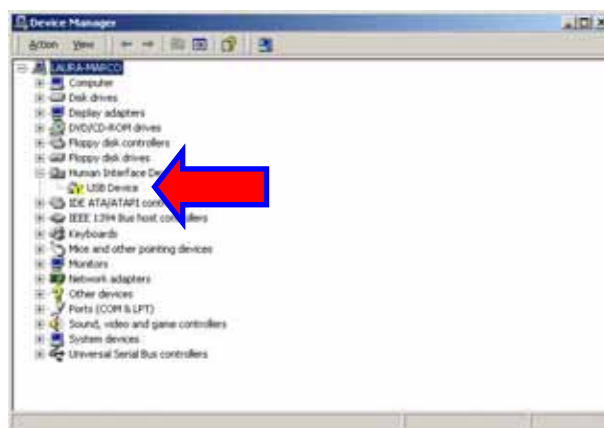
Chapter 6 - USB drivers troubleshooting

In this paragraph are described the possible solutions to the mostly common USB drivers installation troubles encountered.

1. You connect your instrument to a switched on PC but the automatic USB drivers installation does not start:
 - a. Check that the instrument is correctly plugged in the PC USB port.
 - b. Verify that both PC and data logger are switched on.
 - c. Verify that the gauge's internal batteries are new.
 - d. If the data logger switches on but the automatic USB drivers installation does not begin, try to plug the USB cable into another USB port (if a second USB port is available).
 - e. If available, try to use another USB cable to plug the data logger in the PC USB port.
2. The automatic USB drivers installation starts and completes, but the USB driver is not properly installed:
 - a. Please try to plug the USB cable in another PC USB port.
 - b. If available, try to use another USB cable to plug the data logger in the PC USB port.
 - c. If available try to connect another AIM instrument to the PC and check if it works properly. In case all works properly with a different instrument, please contact us.
 - d. Please go in Device Manager layer (Click **START** / **Control Panel**/ **System Properties** and select **Hardware** layer as in the figure here below)



If in the window that appears you find a yellow question mark, as in the figure below, please unplug USB cable from PC USB port, wait for about three seconds and re-plug it in the PC USB port. The yellow question mark should disappear.



If it does not disappear, please follow carefully this procedure:

- go in C / Program files / AIM / USB_NEWDRIVER /AIM_USB
- click twice on AIM_USB_Install.exe file
- one of the following windows can appear



First case



Second Case



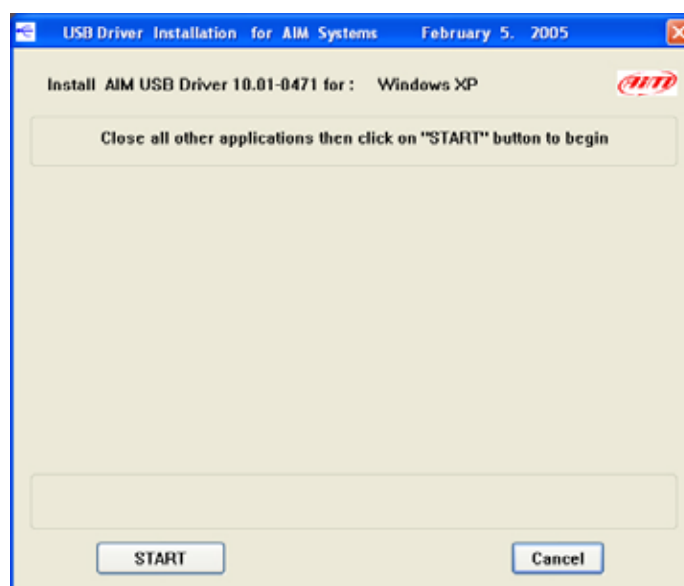
Third Case

First Case: the system informs you that: “**No AIM USB Driver is installed**”.

Second Case: the system informs you that: “It appears to be correctly installed AIM USB Driver ver. 10.01 – 11 CC only; **must be installed ver. 10.01 VID 0471**.”

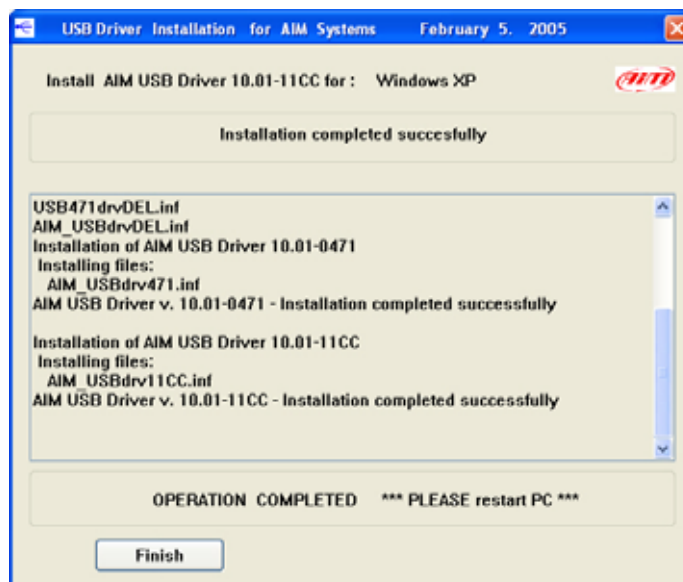
Third Case: the systems informs you that: “It appears to be installed correctly AIM USB Driver 10.01 VID 0471, AIM USB Driver ver. 10.01 VID 11CC. If there are any troubles push Start to proceed”.

In all cases, **please click on “START” button**; the following window appears:



Please close all applications and click on “START” button to begin.

The following window appears:



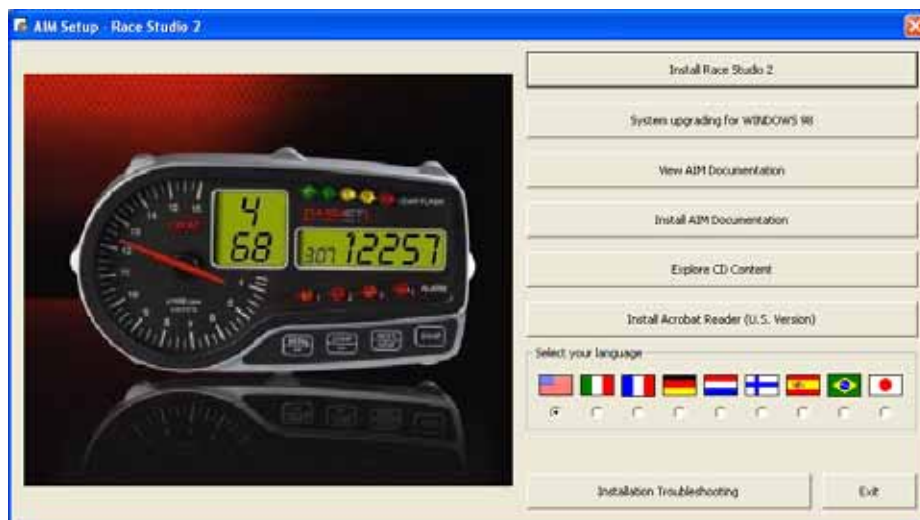
Click on “*Finish*” button and re-start your Pc.
After re-start all MUST WORK PROPERLY.

Chapter 7 – Windows 98™ Troubleshooting

Due to the lack of some components in the database management, the use of **Race Studio 2** is not possible if you have **Microsoft Windows 98™ First Edition** and you have never updated it or you have ever updated any important application (Microsoft Office or Internet Explorer for instance). All the same it can be problematic if you have **Microsoft Windows 98 Second Edition**. This is why the below described procedure has absolutely to be followed for Microsoft Windows 98 First Edition and is strongly recommended for Microsoft Windows 98 second Edition.

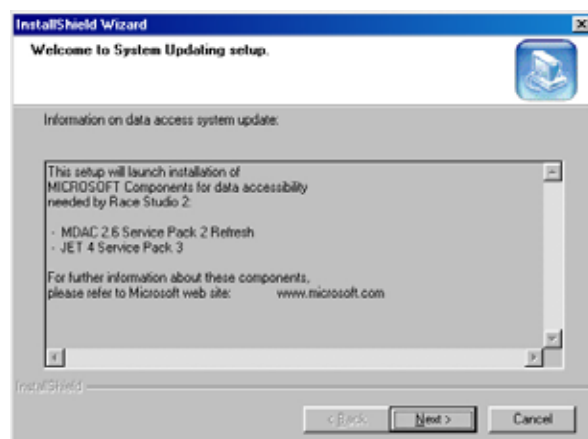
Please note: to solve your problem you have to **carefully follow** this procedure.

- Install Internet Explorer 5.5 or later. If you do not have Internet Explorer 5.5 but an older one, you can freely download the updating from Microsoft website: www.microsoft.com.
- Run **Setup.exe** file. you find it in **Race Studio 2** CD. You can also install it selecting “**System Upgrading for WINDOWS 98**” on **Race Studio 2** installation interface (see below screenshot). If you do not have **Race Studio 2** CD-ROM, you can freely download this file (AIM_SystemUpdating_ENG_040319.exe) from our website: www.aim-sportline.com

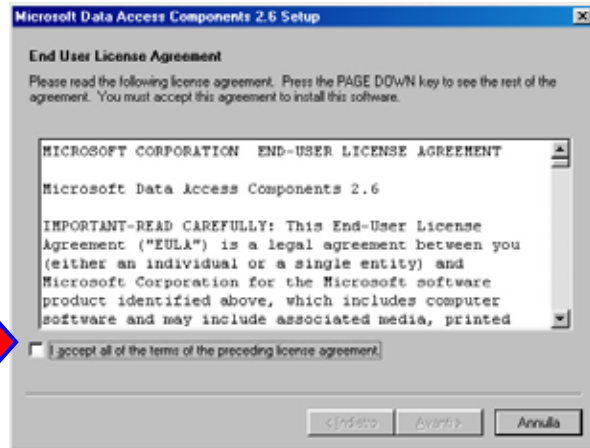


Once System Upgrading procedure has been launched, please follow carefully this procedure

1. The system tells you which upgrading files is going to install on your Pc: click on [Next>] button.

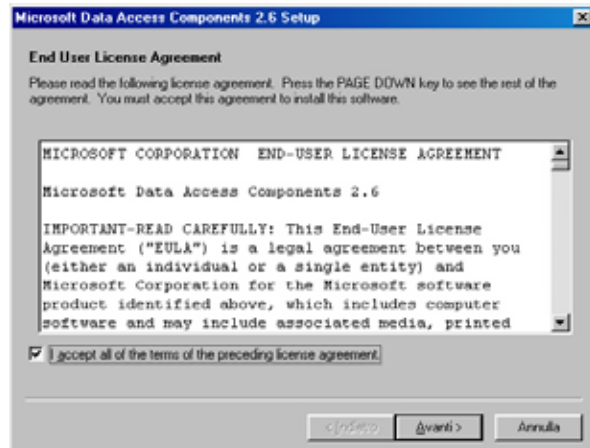


- The system asks you to accept all the items of the licence agreement.

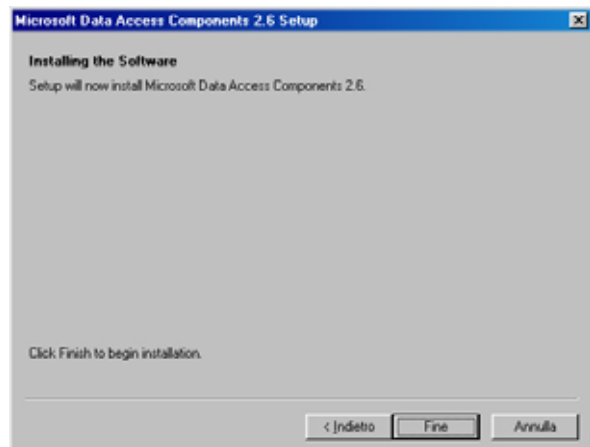


- Please put a check in the “I accept all of the items of the preceding licence agreement” box.

Please note, if you do not agree, the system won't let you go on with the system upgrading.



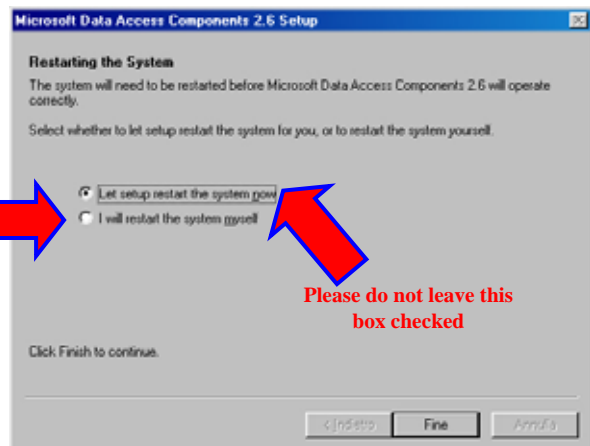
- The System tells you that it is now going to install MDAC 2.6; please click on [Finish] button. This operation can require a few moments.



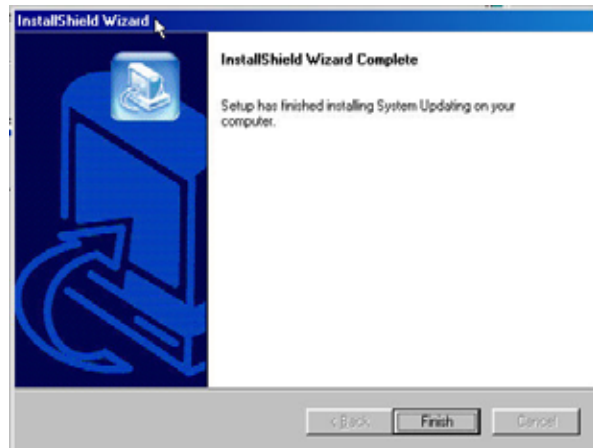
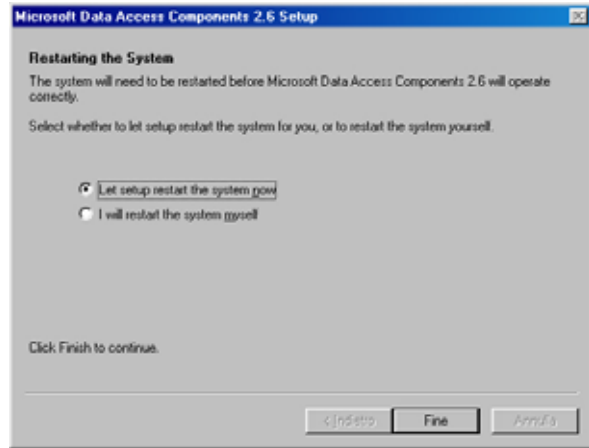
- “Restarting the system” window might appear : **please do not agree**: check “I will restart the system my self” box and click on [Finish] button. The system continues the upgrading procedure.



Please do not leave this box checked



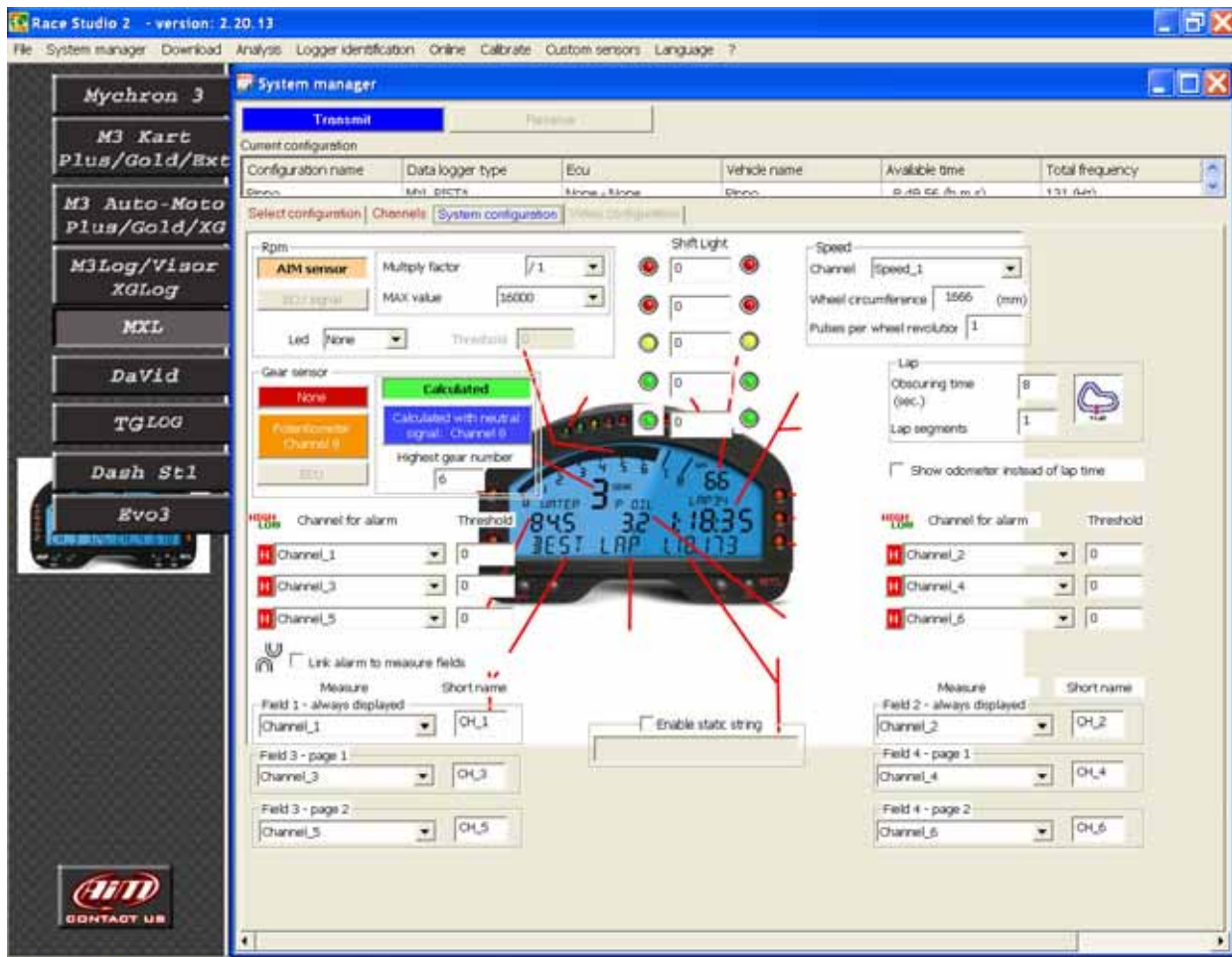
6. If you agree, as in the figure on the right, the system restarts, but **does not** re-run upgrading procedure. You thereby need to manually restart it.
 - If you are upgrading from the CD of **Race Studio 2**, please take it off the CD-Rom of your PC and then re-insert it: the CD runs (if no browse CD); select “**System Upgrading for WINDOWS 98**” on **Race Studio 2** installation interface.
 - If you are upgrading through the downloaded file, please click twice on it (AIM_SystemUpdating_ENG_040319.exe)
 - System Upgrading is finished: click on “*Finish*” button.
 - Install **Race Studio 2** software.



Please note: some users reported that this procedure can solve some working problems of Windows XP Home Edition too.

Chapter 8 –Race Studio 2 visualization problems

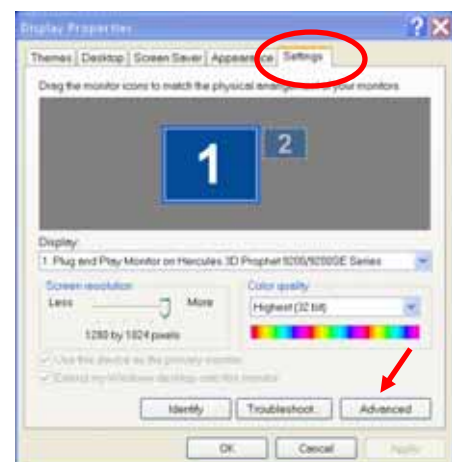
If when you run **Race Studio 2** software your monitor shows a distorted image like the one below, you need to change your Display settings. In this example we have pressed button “**MXL**”.



First of all, please close all applications **Race Studio 2** included, because this operation needs re-start.

To change your screen settings, please follow this proceeding:

- Click on Start / Settings / Control Panel / Display
- “Display properties” window appears.
- Enable “Settings” layer and press “Advanced” button.



- Click on the pop up menu under “DPI Setting”
- Select “Normal (96 DPI)” option.



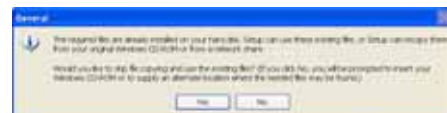
The window on the right appears. Please click on “OK” button.



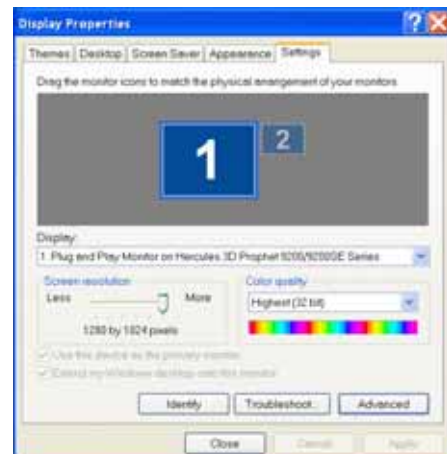
You came back to the previous window, but this time “Apply” button is enabled, please click on it.



If the message you see on the right appears, please click on “Yes button”.



“Display Properties” window appears again. Please click on “Close” button.



The system asks you to re-start your Pc. Please click on “Yes” button and re-start the Computer. After re-start, run **Race Studio 2** and all works properly.

